

Regatta & Regatta HI-RISE

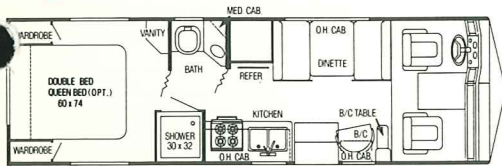
by Gulf Stream Coach

For the Very Best
Class A Values in the U.S.!

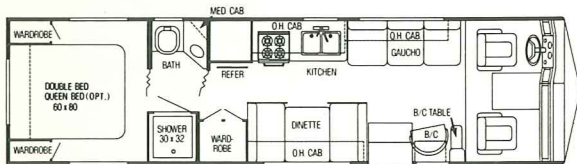


Regatta Hi-Rise is pictured

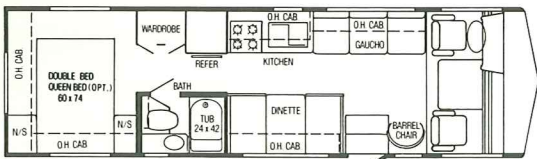
Regatta Hi-Rise



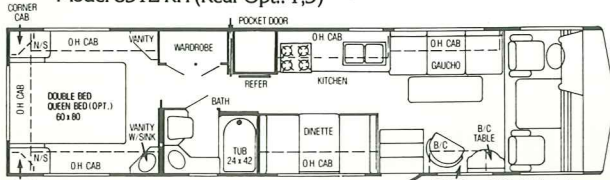
Model 8273-RH (Rear Opt.: 1,3)



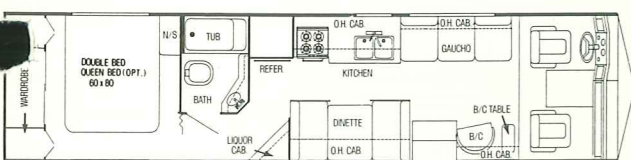
Model 8311-RH (Rear Opt.: 1,3)



Model 8312-RH (Rear Opt.: 1,3)

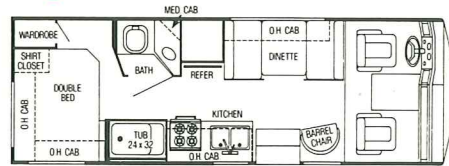


Model 8342-RH (Rear Opt.: 1,3)

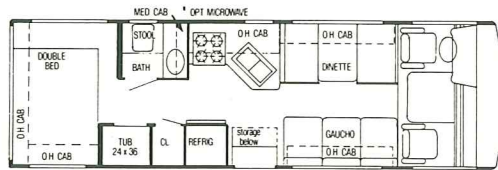


Model 8343-RH

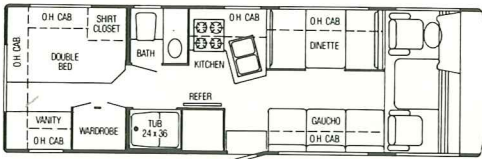
Regatta



Model 8242-RL (Frt. Opt.: D; Rear Opt.: 4)

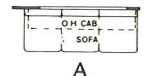


Model 8270-RL (Frt. Opt.: A,B,C; Rear Opt.: 4)

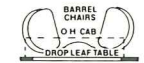


Model 8272-RL (Frt. Opt.: A,B,C; Rear Opt.: 1,2,3)

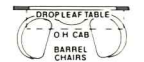
Front Options



A



B

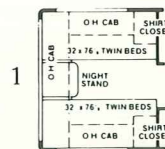


C

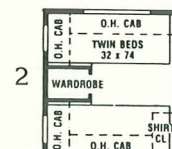


D

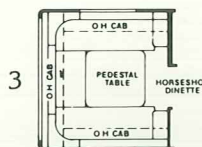
Rear Options



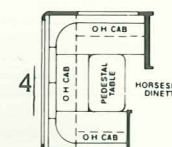
1



2



3



4

See reverse side for Standard Specifications

Regatta & Regatta HI-RISE

Standard Specifications

by Gulf Stream Coach

Interior and Decor

- Self-edged and radius-cornered countertops
- Custom, padded dash w/illuminated gauges
- Deluxe furniture
- Deluxe carpet
- Deluxe window drapes
- Color-coordinated pull-down blinds
- Generous overhead storage
- Extra-large, under-bed storage (Hi-Rise)

Exterior and Construction

- Laminated fiberglass exterior
- Super-structure steel floor system (Hi-Rise)
- 1-1/2" x 1" tubular steel-cage construction
- Tubular steel perimeter-type floor
- Laminated floors w/metal underbelly
- Supplemental steel chassis reinforcement
- Outriggers welded to main frame rails and bolted to floor
- One-piece roof
- High-density block foam insulation in floor, walls and roof
- Fully-welded steel firewall
- Sealed perimeter and engine compartment
- Tinted windshield and windows
- Outstanding side-to-side exterior storage
- Steel-backed front bumper

Electrical Systems

- Easy-access dual battery system
- 12 volt, 45 amp converter
- Electrical supply cord
- Electrical overload protection
- Generator-ready compartment
- Automotive-type color-coded wiring

Bath and Water

- Dual holding tanks
- Fresh water tank
- Demand water system
- City water hook-up
- Double, stainless steel sink
- Tub/shower combination (most models)
- Marine toilet
- Gravity drains on fresh water lines
- Outside fresh water tank drain

Appliances

- 4-burner range w/oven
- Power vent range hood
- Single door, 2-way refrigerator
- Microwave-ready

Heating, Ventilation and

- 25,000 BTU
- 31,000 BTU ducted furnace (Hi-Rise)
- Pre-wired for roof air-conditioning

Deluxe Standard Features

- Cruise control
- Monitor panel
- Power vent in commode
- Converter w/battery charger
- Generator-ready
- 65 lb. LP tank – Hi-Rise models 8273, 8311, 8312, 8342 & 8343
- 42 lb. LP tank – models 8242, 8270 & 8272
- Radial tires and spare – models 8242, 8270 & 8272
- Dash air-conditioner
- 3-way captain's chairs

Chassis

- Ford w/460 C.I.D. V-8 engine – models 8242, 8270 & 8272
- GM w/454 C.I.D. V-8 engine – standard on models 8273, 8311, 8312, 8342 & 8343
- John Deere w/460 C.I.D. V-8 engine – available on models 8311, 8312, 8342 & 8343
- 3-speed automatic transmission
- Electronic ignition
- Tilt steering wheel
- Power steering and brakes

- High capacity automotive heater
- Gasoline tank:
 - Ford – Approx. 40 gal.
 - GM – Approx. 60 gal.
 - John Deere – Approx. 90 gal.
- Wheel Base:
 - Model 8242 – 159"
 - Model 8270 – 159"
 - Model 8272 – 159"
 - Model 8273 – 178"
 - Model 8311 – 178"
 - Model 8312 – 178"
 - Model 8342 – 208"
 - Model 8343 – 208"
- Exterior Length:
 - Model 8242 – Approx. 24'
 - Model 8270 – Approx. 27'
 - Model 8272 – Approx. 27'
 - Model 8273 – Approx. 27'
 - Model 8311 – Approx. 31'
 - Model 8312 – Approx. 31'
 - Model 8342 – Approx. 34'
 - Model 8343 – Approx. 34'
- Exterior Height - 6'5"
- Coach Body Height:
 - Model 8242 – 9'8"
 - Model 8270 – 9'8"
 - Model 8272 – 9'8"
 - Model 8273 – 10'5"
 - Model 8311 – 10'5"
 - Model 8312 – 10'5"
 - Model 8342 – 10'5"
 - Model 8343 – 10'5"
- Exterior Width – 8'0"

For further information and available floorplan options, contact your local dealer or Gulf Stream Coach, Inc. Also ask about our full line of Class A and Class C motorhomes, travel trailers and vans.

 **Gulf Stream Coach, Inc.**

P.O. Box 1005 • Nappanee, Indiana 46550

Gulf Stream Coach, Inc. reserves the right to make changes in prices, colors, materials, components and specifications and to discontinue models at any time without notice or obligation. Gulf Stream

Coach, Inc. assumes no responsibility for any error in type or print reproduction of specifications or floorplans in this brochure.

Your Dealer