

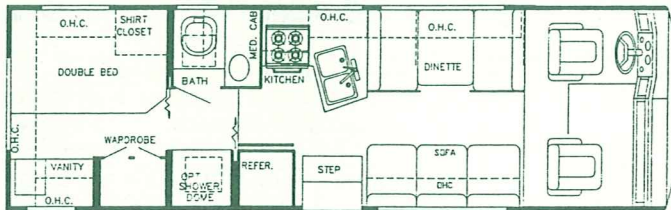
11/91

Sun Clipper

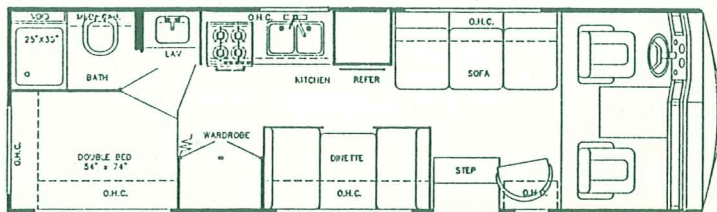
Floorplans



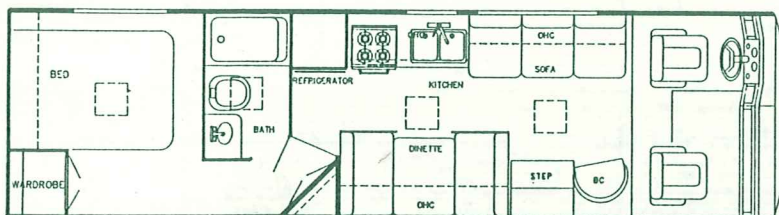
Model 8272 SC



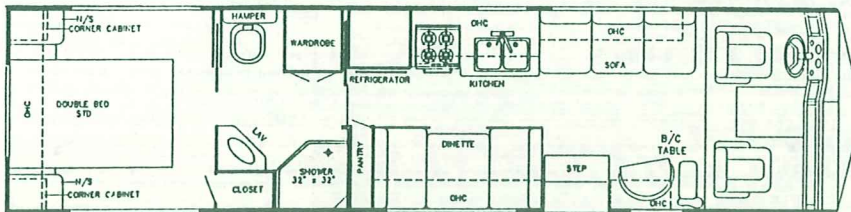
Model 8275 SC



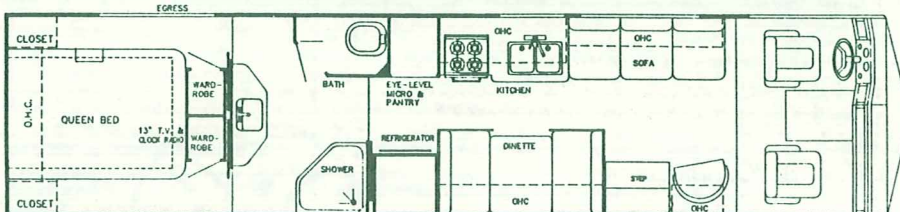
Model 8303 SC



Model 8322 SC



Model 8345 SC



Sun Clipper

Standard Specifications

Interior and Decor

- Self-Edged & Radius-Cornered Countertops
- Custom, Padded Dash W/Illuminated Gauges
- Deluxe Furniture
- Carpet W/Pad
- Deluxe Color-Coordinated Mini-Blinds
- Fabric-Covered Lambrequin Window Treatment
- Generous Overhead Storage

Exterior and Construction

- Smooth Laminated Fiberglass Exterior
- 1½" x 1" Tubular Steel-Cage Construction
- Tubular Steel Perimeter-Type Floor
- Laminated Floors W/Metal Underbelly
- Supplemental Steel Chassis Reinforcement
- Outriggers Welded to Main Frame Rails & Bolted to Floor
- Radius, Laminated Rubber Roof W/Steel Rafters
- High-Density Block Foam Insulation in Floor, Walls & Roof
- Fully-Welded Steel Firewall
- Sealed Perimeter & Engine Compartment
- Tinted Windshield & Windows
- Outstanding Exterior Storage
- Steel-Backed Front Bumper

Electrical Systems

- Easy-Access Dual Battery System
- 12-Volt, 45-AMP Converter W/Battery Charger
- Electrical Supply Cord
- Electrical Overload Protection
- Generator-Ready Compartment
- Automotive-Type Color-Coded Wiring
- Emergency Start Switch

Bath and Water

- Dual Holding Tanks (Approx. 40 Gal.)
- Fresh Water Tank (Approx. 40 Gal.)
- Demand Water System
- City Water Hook-Up
- Double, Stainless Steel Sink
- Marine Toilet
- Gravity Drains on Fresh Water Lines

Appliances

- 4-Burner Range W/Oven
- Power-Vent Range Hood
- Double-Door Refrigerator
- Microwave-Ready

Heating, Ventilation and Air Conditioning

- 25,000 BTU Ducted Furnace (Models 8272, 8275)
- 30,000 BTU Ducted Furnace (Models 8303, 8322, 8344 & 8345)
- Pre-Wired for Roof Air Conditioning

Deluxe Standard Features

- Cruise Control
- Monitor Panel
- Power Vent in Commode
- Generator-Ready
- 42 Lb. LP Tank (Model 8272, 8275)
- 65 Lb. LP Tank (Models 8303, 8322, 8344 & 8345)
- Radial Tires & Spare (Ford Chassis Only)
- Dash Air Conditioner
- 3-Way Captain's Chairs
- Lug Wrench & Jack
- Fire Extinguisher
- Awning Rail
- Rear Mud Flaps
- AM/FM Cassette Stereo W/4 Speakers

Chassis

- 460 CID — Ford
- 454 CID — GM
- 4-Speed Automatic Transmission
- Electronic Ignition
- Tilt Steering Wheel
- Power Steering & Brakes
- High-Capacity Automotive Heater
- Gasoline Tank: (Approx.)
 - 70 Gal. — Ford (40 Gal. E33 Ford)
 - 60 Gal. — GM
- Exterior Length: (Approx.)
 - 27' — Model 8272
 - 27' — Model 8275
 - 30' — Model 8303
 - 32' — Model 8322
 - 34' — Model 8344
 - 34' — Model 8345
- Interior Height — 6'11" (Approx.), 6'5" in Bedroom
- Coach Body Height — 9'11" (Approx.)
- Exterior Width — 8'0" (Approx.)

For further information and available floorplan options, contact your local dealer or Gulf Stream Coach, Inc. Also ask about our full line of Class A, Class C and Micro-Mini motorhomes, travel trailers, fifth wheels and vans.



P.O. Box 1005 • Nappanee, Indiana 46550

Gulf Stream Coach, Inc. reserves the right to make changes in prices, colors, materials, components and specifications and to discontinue models at any time without notice or obligation. Gulf Stream Coach, Inc. assumes no responsibility for any error in type or print reproduction of specifications or floorplans in this brochure.

YOUR DEALER

See Reverse Side for Floorplans