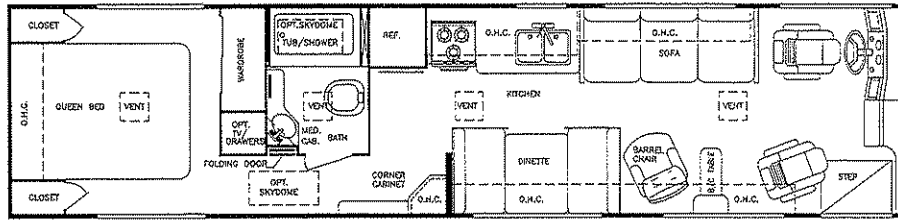


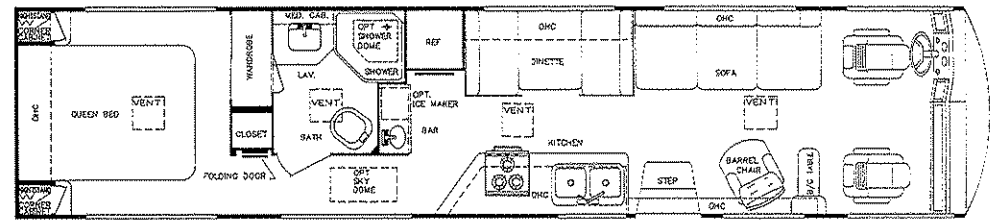


Friendship LXE DIESEL

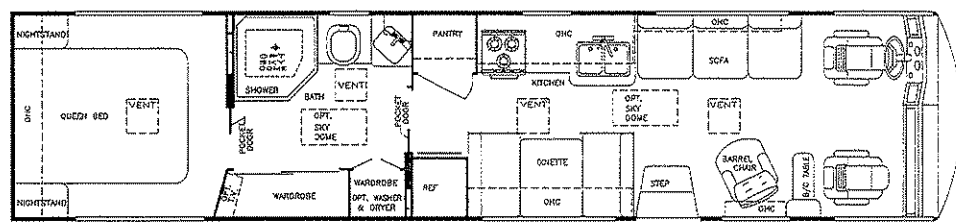
by Gulf Stream®



MODEL 8351



MODEL 8370



MODEL 8372

Friendship LXE

Standard Specifications

Interior and Decor

- Radius Cabinet & Wall Corners
- Metal Drawer Guides w/Nylon Rollers
- Formica Countertops & Tile
- Custom Dash w/Illuminated Gauges
- Windshield Privacy Drape
- Deluxe Carpet w/Pad
- Deluxe Furniture
- 3-Way Driver & Passenger Seat
- Coordinated Bedspread & Shams
- Island KOA or Woodland Rose, High-Pressure Laminated Cabinetry & Doors
- Generous Overhead Storage
- Lighted Closets
- Decorator Mirror

Exterior and Construction

- Laminated 2" Thick Floor, Walls & Roof
- Super Structure Steel Floor System
- Tubular Steel Cage Construction
- Laminated Floors w/Metal Underbelly
- Block Foam Insulation in Floor, Walls & Roof
- Fiberglass-Impregnated Luan Sidewalls
- Fully-Welded Steel Firewall
- Sealed Perimeter & Engine Compartment
- Fiberglass Integrated Bumper
- One-Piece, Rear Fiberglass Cap
- Back-Up Alarm
- One-Piece Laminated Rubber Roof
- Panoramic Windshield
- Extra-Large Tinted Windshield & Windows
- Outstanding Side-to-Side, Lighted, Carpeted Exterior Storage

Bath and Water

- Dual Holding Tanks - Approx. 40 Gal. Each
- Fresh Water Tank - Approx. 60 Gal.
- Demand Water System
- Water Manifold Distribution System
- Double Stainless Steel Sink
- Sink Covers
- Shower Stall
- Deluxe Padded Stool w/Sprayer
- Mirrored Medicine Cabinet
- Gravity Drains on Fresh Water Lines
- 6 Gal. DSI Water Heater

Chassis

- Spartan Diesel IC Chassis
- Channel-Type, 8" x 3-1/2" x 1/4" Solid One-Piece Frame Rails, Fastened w/Grade 8 Bolts & Locknuts
- 14 Gauge Ultra-High Temperature Wire w/Circuit Descript. Every 3"
- V-Pad Engine Mount - Greatly Reduces Vibration
- Side-Mounted Rochester Fuel Gauge
- Midland A.B.S. Brakes w/Auto-Slack Adjustors
- Leaf-Spring Suspension
- Cummins 6CTA 250HP @ 2500 RPM, 660 ft. lb. Torque, Turbo-Charged & After Cooled
- Allison MD 3060 - 6-Speed "World" Automatic Transmission
- 10-Stud, 11.25 BC Wheels w/Radial Tires
- Tilt Steering Column
- Wheel Base: Model 8351 - 228" Model 8370 - 252" Model 8372 - 252"
- Exterior Length (Approx.): Model 8351 - 35' Model 8370 - 37' Model 8372 - 37'
- Interior Height: Approx. 6' - 6-3/4"
- Exterior Height: Approx. 10' - 9"
- Exterior Width: Approx. 8'
- Fuel Tank: Model 8351 - Approx. 80 Gal. Model 8370 - Approx. 80 Gal. Model 8372 - Approx. 80 Gal.

Electrical Systems

- Slide-Out Chassis & Coach Batteries
- 12-Volt, 75-Amp Converter w/Batt. Charger
- Electric Supply Cord
- Electric Overload Protection
- 7.5 Onan Diesel Generator (Opt.)
- Automotive-Type, Color-Coded Wiring
- AM/FM Stereo Cassette in Dash & Bedrm.
- Quad Headlight System
- Lighted Entry Way & Aisle Lights
- Directional Reading & Map Lights
- Positive Battery Shut-Off Switches

Appliances

- 3-Burner High-Output Porcelain Range w/Oven
- Lighted, Power Range Hood
- Large 2-Way, Flush-Mount, Dbl. Dr. Refer.
- Microwave Ready
- 19" Color TV w/Opt. VCR
- Residential Telephone

Heating, Ventilation & Air Cond.

- 40,000 BTU Ducted Furnace
- Air Conditioner (Opt.)

Deluxe Standards

- Auto Dash Air Conditioner
- Auto Cruise Control
- Automatic Emergency Start Switch
- Power Vent in Bath
- 115 Lb. LP Tank
- Auxilliary Batteries



Gulf Stream Coach, Inc.[®]

P.O. Box 1005 • Nappanee, IN • 46550

Your Dealer

For further information and available floorplan options, contact your nearest dealer or Gulf Stream Coach, Inc. Also ask about our other Class A motorhomes, Class C motorhomes, Travel Trailers and Fifth Wheels. Gulf Stream Coach, Inc. reserves the right to make changes in prices, colors, materials, components and specifications and to discontinue models at any time without notice or obligation. Gulf Stream Coach, Inc. assumes no responsibility for any error in type or print reproduction of specifications or floorplans in this brochure. SCG RR 694