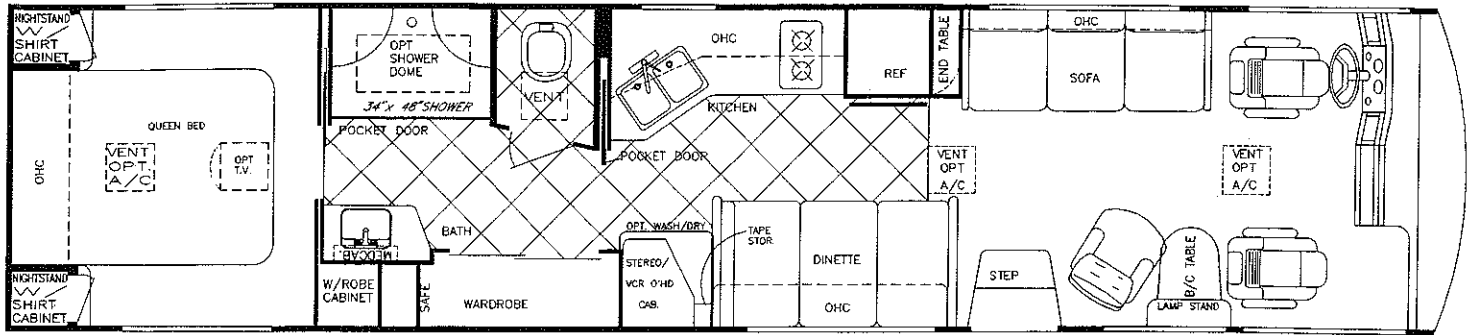


1/96

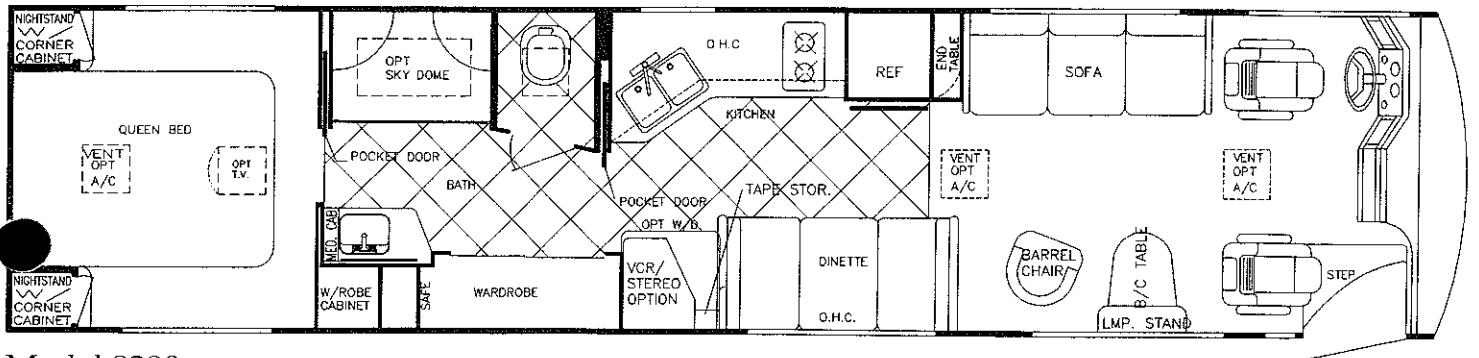
# TOUR MASTER

BY GULF STREAM®

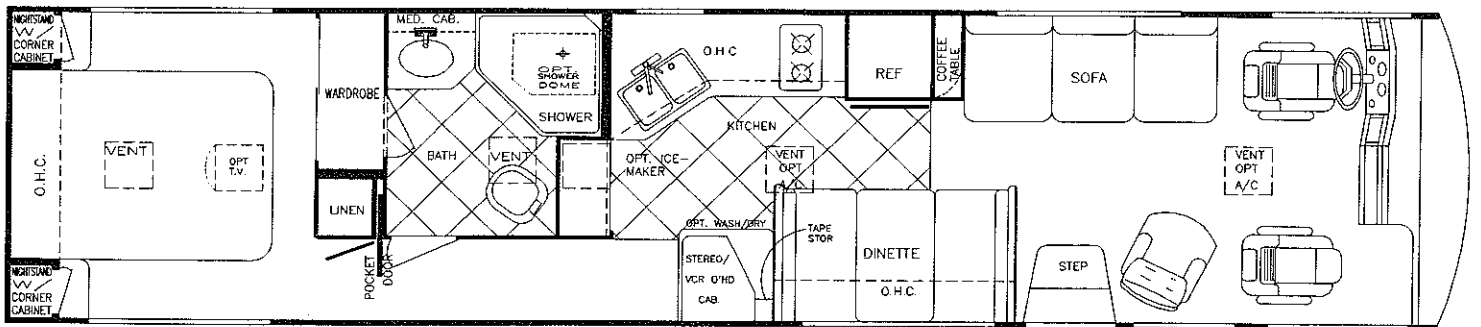
## Wide-Body DIESEL



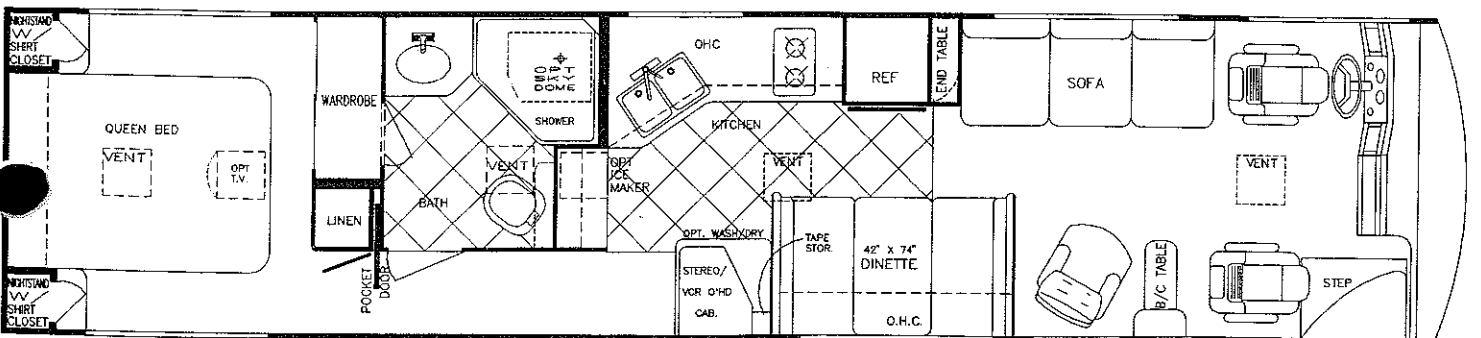
Model 8390 (Side Door Entry)



Model 8390 (Front Door Entry)



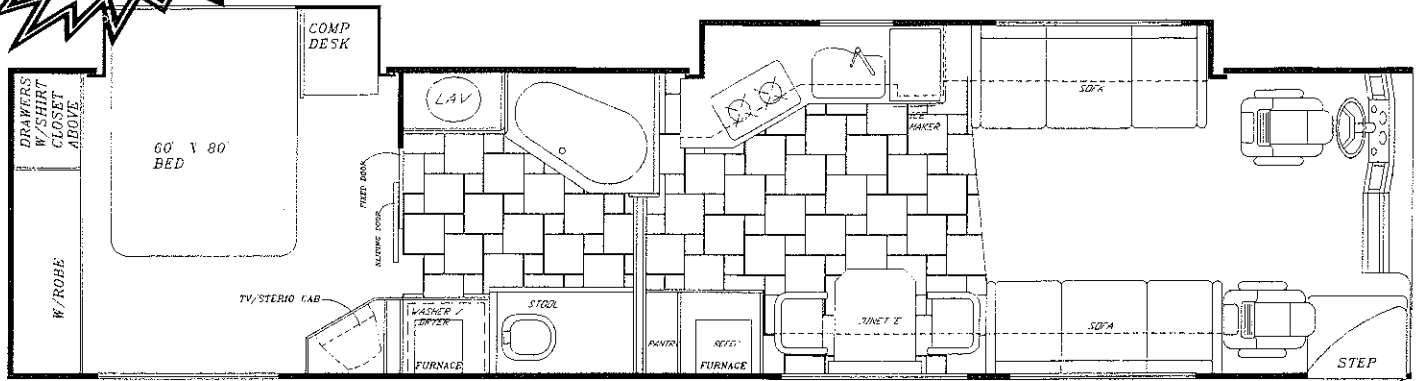
Model 8391 (Side Door Entry)



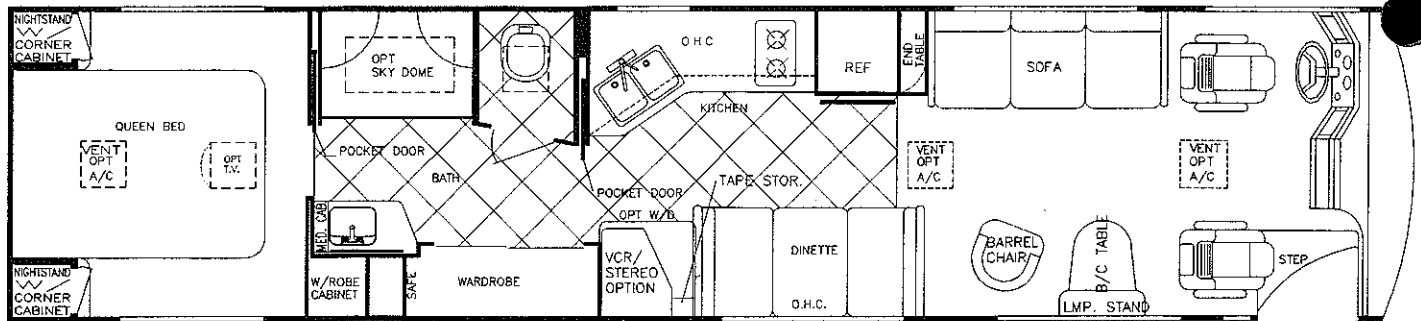
Model 8391 (Front Door Entry)

# TOUR MASTER

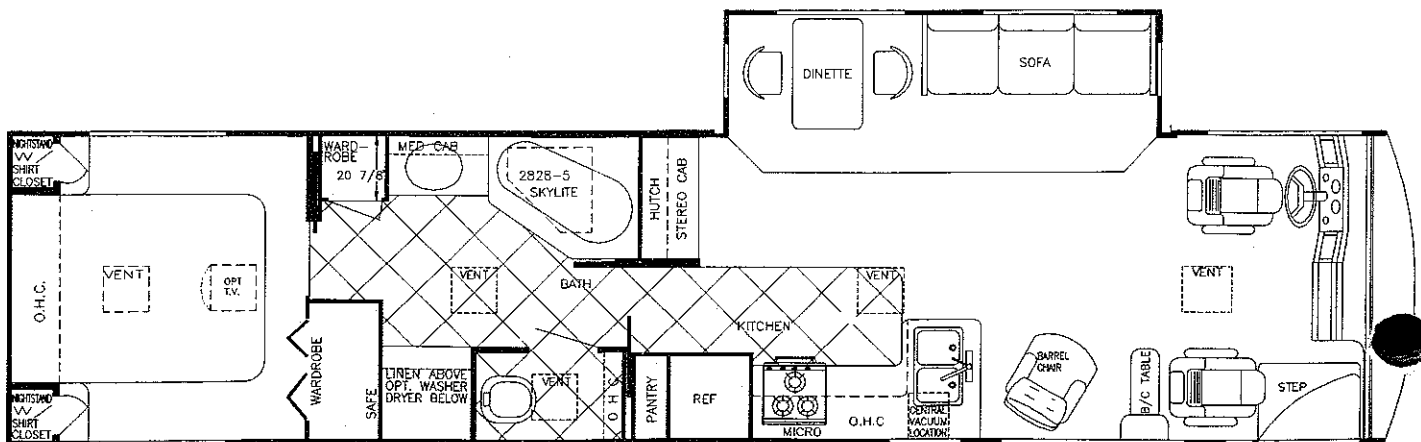
**NEW!**



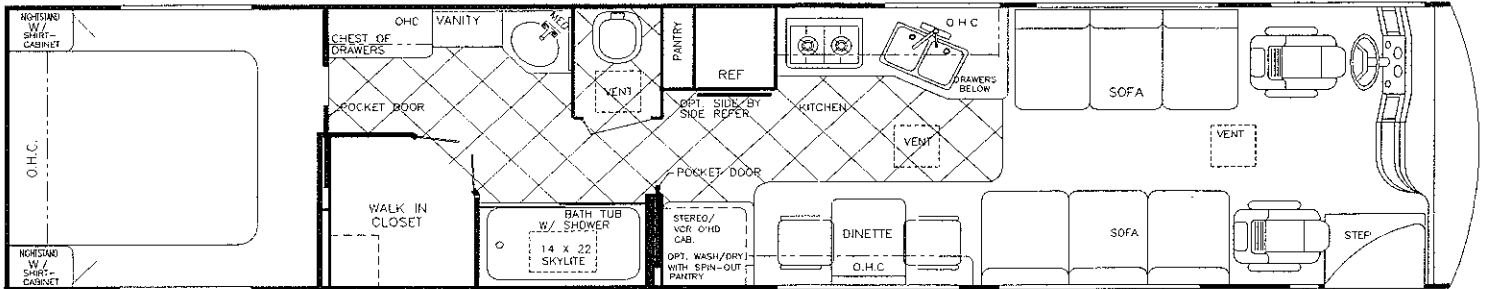
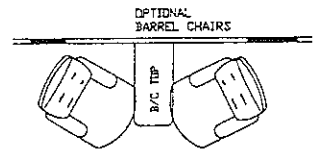
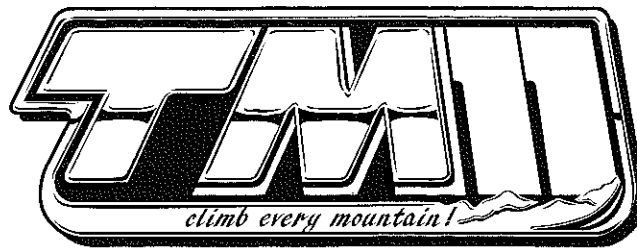
Model 8404 (Glide-Out Expando)



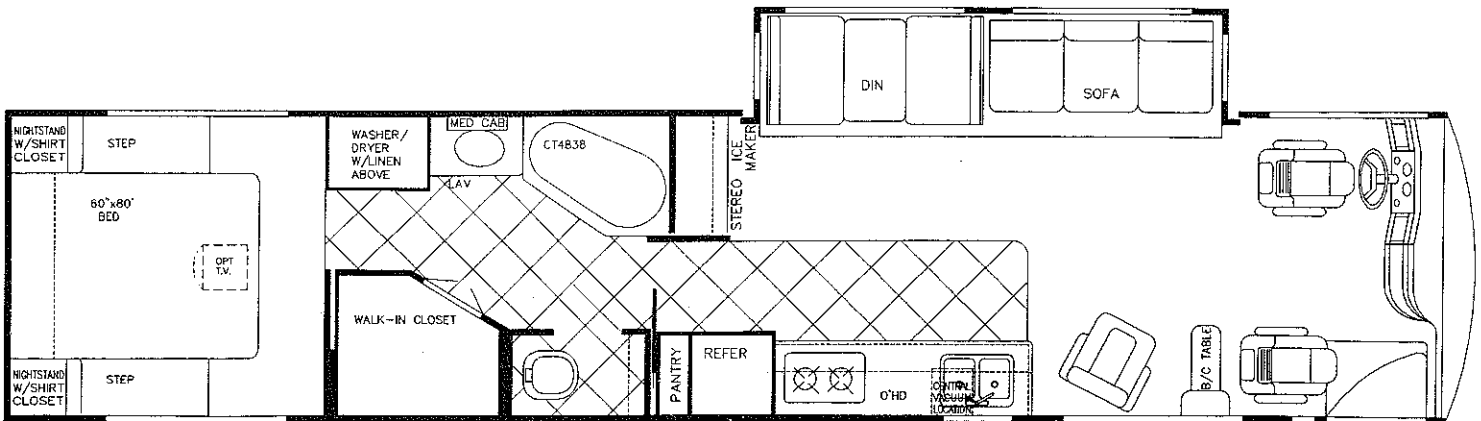
Model 8392



Model 8393 (Glide-Out Expando)



Model 8400



Model 8403 (Glide-Out Expando)

# TOUR MASTER

BY GULF STREAM®

## Wide-Body DIESEL

### Electrical System

- Slide-Out Coach Batteries
- 12-Volt, 75-Amp Converter w/Battery Charger
- Electrical Supply Cord -- 50 Amp (30 Amp Cord on CSA)
- Electric Overload Protection
- Automotive-Type Color-Coded Wiring
- Deluxe AM/FM Stereo Cassette in Dash
- Lighted Entry Way and Aisle Lights
- Directional Reading and Map Lights
- Positive Battery Shut-Off Switches
- Electric Step w/Elec. Sliding Step Lid
- 7.5 Onan or Generac Diesel Generator on Automatic Front Slide-Out Tray
- Deluxe Rack-Mounted Stereo System with CD Player w/Infrared Remote (Opt. except TM11's - Std.)

### Bath and Water

- Dual Holding Tanks -- Approx. 50 Gal. Each
- Fresh Water Tank -- Approx. 100 Gal. 150 Gal. on TM11's
- Super Flow Manifold Water Distribution System (N/A w/CSA)
- Demand Water System
- City Water Hook-Up
- Double-Bowl Solid Surface Sink
- Sink Covers
- Fiberglass Shower w/Gold-Tone Shower Stall and Fixtures
- Mirrored Medicine Cabinet
- Gravity Drains on Fresh Water Lines
- 10 Gal. Gas/Electric Water Heater

### Appliances

- 2-Burner High-Output Recessed Range Top w/Covers
- Large, 2-Way, Flush-Mounted Double-Door Refrigerator
- Side-by-Side, Double-Door 3-Way Refrigerator (Opt.)
- Microwave/Convection Oven w/Power Vent
- 50 lb. Freezer/Cooler on Slide Tray (Opt.)
- Residential Telephone
- 19" Color TV w/VCR in Front O.H.
- 13" Color TV in Bedroom (Opt.)

### Heating, Ventilation & Air Conditioning

- Dual 35,000 BTU Furnaces
- Two 13,500 BTU Ceiling Ducted Air Conditioners
- 15,000 BTU Front Air Conditioner (Opt.)

### Diesel Chassis

- Channel-Type, Raised-Rail Frame
- Stemco Seals -- Bearings Lubricated w/Oil Instead of Grease
- 14-Gauge Ultra-High Temperature Wire w/Circuit Description Every 3"
- 4-Point V-Pad Engine Mount Greatly Reduces Vibration
- Side-Mounted Rochester Fuel Gauge
- Grau-Midland Anti-Lock Brake System
- Air Brakes w/Midland Pure Air Plus Heated Air Dryer
- Air Suspension
- Cummins 6 CTA 8.3 Diesel Engine w/ 325 HP
- Turbo Charged and After Cooled
- Allison MD 3060P 6-Speed Electronically Shifted Automatic Transmission
- Freightliner Chassis with Cummins 6CTA 8.3 Diesel Engine, w/325 HP, Allison MD 3060 Transmission (Opt.)
- Spartan K2 Chassis w/400 HP, 11 Liter Cummins Diesel Engine, 1350 Ft./Lb. Torque, Allison H740 6-Speed Electronic Transmission, 276" Wheel Base, 11R 22.5 Radial Tires (TM11's)
- Tilt and Telescoping Douglas Steering Column
- High Capacity Automotive Heater
- Four 10-Stud, 11.25 BC Alcoa Aluminum Wheels w/265/75RX225 Radial Tires
- 4.63:1 Rear Axle Ratio (4.11:1 - TM11's)

### Deluxe Standard Features

- Auto Dash Air Conditioner
- Auto Cruise Control
- Power Vent in Bath
- Auxiliary Batteries
- 150 Lb. LP Tank
- LPG Leak Detector



**GULF STREAM COACH, INC.**

P.O. Box 1005 • Nappanee, IN 46550

For further information and available floorplan options, contact your nearest dealer or Gulf Stream Coach, Inc. Gulf Stream Coach, Inc. reserves the right to make changes in prices, colors, materials, components and specifications and to discontinue models at any time without notice or obligation. Some items shown may be optional and are not included in the purchase price of the vehicle. Test drive and review a current model on your Gulf Stream dealer's lot today.

20M TP 11/86

# Standard Specifications

DIESEL MODELS	8390	8391	8392	8393	8404	8400	8403
<b>SPARTAN Chassis:</b>	Mountain Master	Mountain Master	Mountain Master	Mountain Master	Mountain Master	<b>K2</b>	<b>K2</b>
Engine (HP)	325	325	325	325	325	400	400
GVWR (lbs.)	29,000	29,000	29,000	29,000	29,000	35,000	35,000
Front Gross Axle Wt. Rating	10,000	10,000	10,000	10,000	10,000	12,000	12,000
Rear Gross Axle Wt. Rating	19,000	19,000	19,000	19,000	19,000	23,000	23,000
<b>FREIGHTLINER Chassis:</b>							
Engine (HP)	325	325	325	325	325	N/A	N/A
GVWR (lbs.)	29,000	29,000	29,000	29,000	29,000	N/A	N/A
Front Gross Axle Wt. Rating	10,000	10,000	10,000	10,000	10,000	N/A	N/A
Rear Gross Axle Wt. Rating	19,000	19,000	19,000	19,000	19,000	N/A	N/A
<b>DIMENSIONS:</b>							
Wheelbase	252"	252"	252"	252"	252"	276"	276"
Overall Length	38' 3"	38' 3"	38' 3"	38' 3"	38' - 3"	39' 9"	39' 9"
Overall Height w/Roof A/C	12' 0"	12' 0"	12' 0"	12' 0"	12' 0"	12' 0"	12' 0"
Overall Width	101"	101"	101"	101"	101"	101"	101"
Interior Height	80"	80"	80"	80"	80"	80"	80"
Interior Width	97"	97"	97"	97"	97"	97"	97"
<b>CAPACITIES:</b>							
Fresh Water Tank (Gal.)	100	100	100	100	100	150	150
Grey Holding Tank (Gal.)	50	50	50	50	50	65	65
Black Holding Tank (Gal.)	50	50	50	50	50	65	65
Water Heater w/DSI (Gal.)	10	10	10	10	10	10	10
LP Gas Tank (lbs.)	150	150	150	150	150	150	150
Fuel Tank (Gal.)	150	150	150	150	150	150	150
Dual Furnaces (BTU's)	35K/ea.	35K/ea.	35K/ea.	35K/ea.	35K/ea.	35K/ea.	35K/ea.

## Interior and Decor

- White Formica Laminated Cabinetry w/ "Thermafoil" Hardwood Doors
- Rich Natural Cherry Hardwood Interior (Optional except on TM11's)
- Laminated Formica Paneling
- Radius Cabinet & Wall Corners
- Fabric-Covered Shelving
- Deluxe Solid Surface Countertops
- Custom Padded Dash w/Illuminated Gauges
- Deluxe Furniture
- 3-Way Driver & Passenger Seats with Leather Seating Surface
- "Villa" Leather Driver & Buddy Seat w/Power Foot Rest (TM11's)
- Deluxe Carpet w/Pad
- Tile Floor in Kitchen and Bath
- Day/Night Shades Throughout
- Deluxe Privacy Drapes
- Coordinated Bedspreads & Shams
- Cedar-Lined Wardrobe with Wall Safe
- Beveled Glass Decorator Mirrors in Living Area, Bedroom & Bathroom
- Carpeted Ceiling

## Exterior and Construction

- 1-1/2" x 1-1/2" Tubular Steel Cage Construction
- Laminated Floors w/Metal Underbelly
- Super-Structure Steel Floor System
- Laminated 2" Thick Floor and Wall Construction
- R-7.5, 1 1/2" Block Foam Insulation in Floor and Walls
- Sidewalls Lag-Bolted Every 8" or Less to Floor Structure
- Full Fiberglass Front and Rear Caps
- Fiberglass Integrated Bumpers
- Exterior Entertainment Center (Opt.)
- Fully-Welded Steel Firewall
- Sealed Perimeter & Engine Compartment
- Seamless, One-Piece Radiused Rubber Roof w/Thick R-17 Insulation
- Roof Lag-Bolted Every 8" or Less to Sidewalls
- Super-Slick Laminated Fiberglass Siding
- Panoramic One-Piece, Clearview Windshield
- Tinted Windshield & Windows
- Color-Coordinated Paint Scheme w/ Contemporary Painted Graphics & Clear Coat Finish
- Outstanding Side-to-Side, Carpeted, Lighted Exterior Storage
- Back-Up Alarm

# IF YOU WANT A COACH THAT'S BUILT AS WELL AS A GULF STREAM...

1 Seamless Rubber Roof For Greater Energy Efficiency and Dependability

2 Luan Decking for Additional Strength

3 Molded EPS Brick Insulation Provides Consistent Insulative Value As Well As Superior Dimensional Rigidity

4 One-Piece Formed Aluminum Air Conditioning Duct, Completely Surrounded By Polystyrene Insulation

5 Bubble-Wrapped Foil Insulation Provides Superior Insulation

6 Rugged Welded Steel Tube Roof Framing

7 Soft Touch Ceiling Fabric for Added Sound Insulation

8 Aluminum Cove Molding

9 Bubble-Wrapped Foil Insulation Minimizes Thermal Transfer

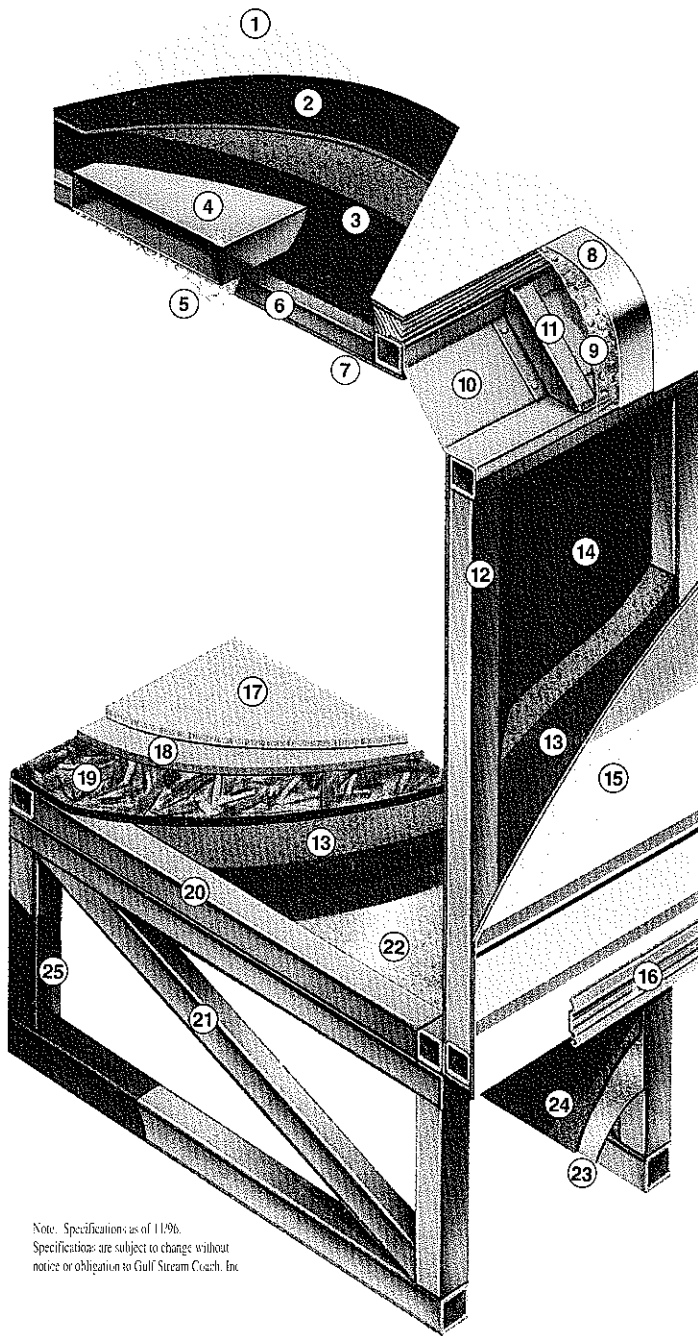
10 Rugged Roll-Formed Steel Roof-to-Sidewall Transition Member Insures Structural Integrity and Stability

11 Die-Stamped Steel Transition Member Gusseting Provides Greater Strength and Structural Integrity

12 Rugged Heavy-Gauge Steel Tubing, Fixture Welded to Form the Sidewall Framing

13 High-Density EPS Insulation Provides Superior Laminating and Bonding Characteristics and Insures Greater Energy Efficiency

14 Interior Wall Panels Securely Laminated to Sidewall Framing



Note: Specifications as of 11/96. Specifications are subject to change without notice or obligation to Gulf Stream Coach, Inc.

15 "Mende" Fiberglass Exterior, Vacuum-Bond Laminated to Sidewall Framing for Lasting Beauty and Durability

16 Aluminum Trunk Door Hinge Extrusion Provides A Tight Seal Discouraging Air or Water Infiltration

17 High-Quality Stain-Resistant Carpeting Available in Designer-Coordinated Colors

18 Extra-Thick Padding Under Carpet Provides Extra Comfort and Increases Carpet Durability

19 Continuous Structurewood Floor Decking Laminated to Steel Floor Structure Assures a Quiet, Long-Lasting, Rigid Floor

20 Heavy-Gauge Steel Tube Frame Fixture Welded for Extra Strength and Stability

21 Heavy-Gauge Steel Tube Framing, Fixture Welded Floor Truss System Provides the Strongest Motorhome Foundation in the Industry

22 Seamless Layer of Galvanized Steel Securely Laminated to the Steel Floor Framing

23 Galvanized Steel Used to Form Each Storage & Holding Compartment

24 Durable All-Weather Carpeting Completes Each Accessible Storage Compartment, Providing Extra Protection for Luggage and Valuables

25 Rust-Prohibitive Paint Coating Applied to All Steel Framing Assures Corrosion and Rust Protection



## IT'S GOING TO HAVE TO BE A GULF STREAM!