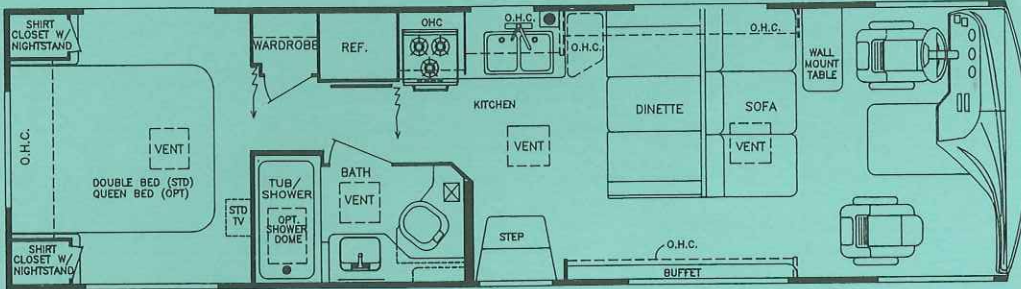
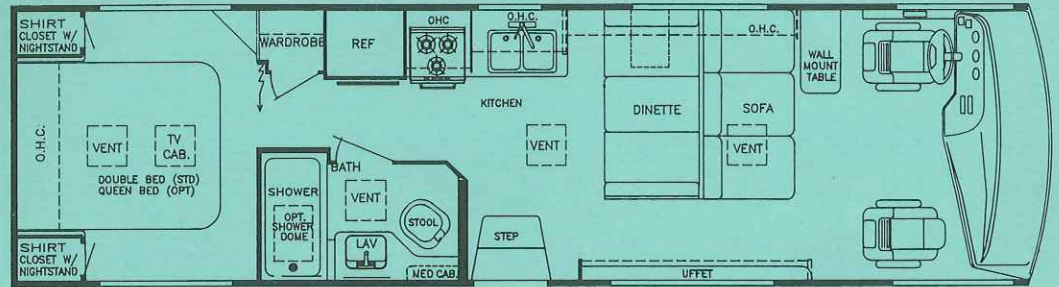


SUN STREAM XL

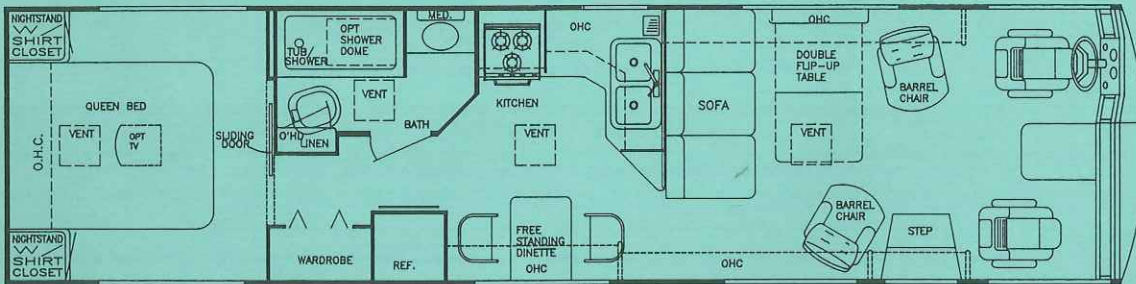
BY GULF STREAM®



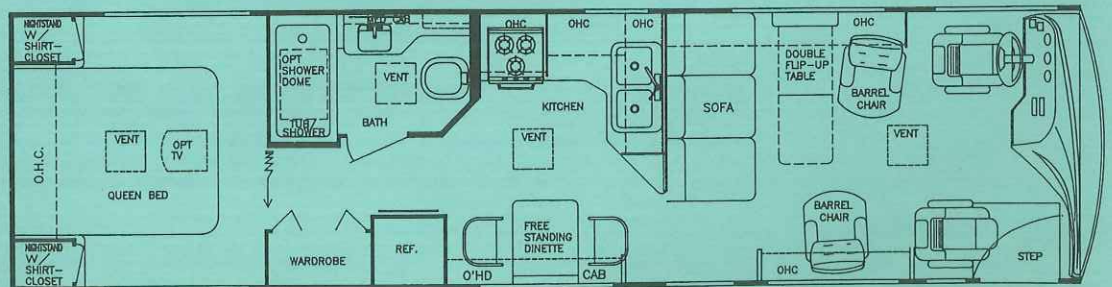
Model 8326 MXG



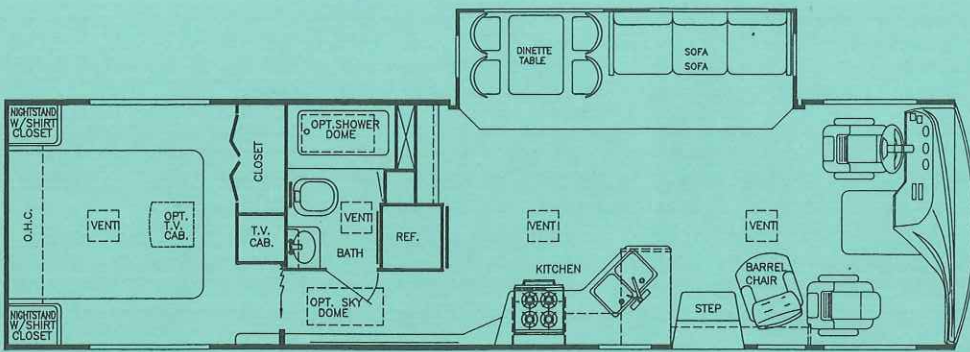
Model 8326 MXD



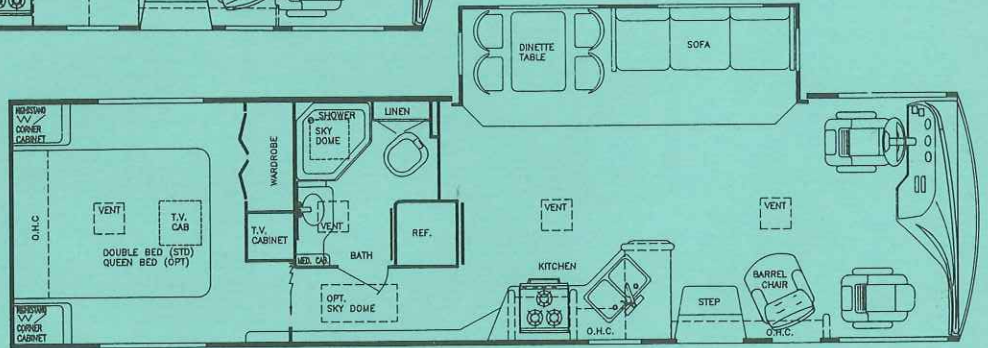
Model 8340 MXG



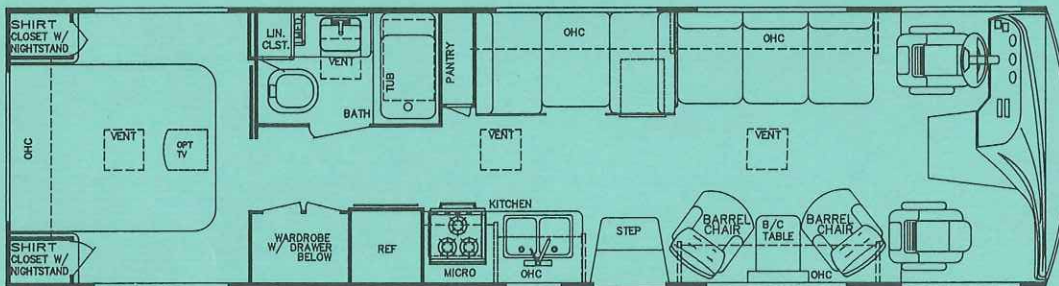
Model 8340 MXD



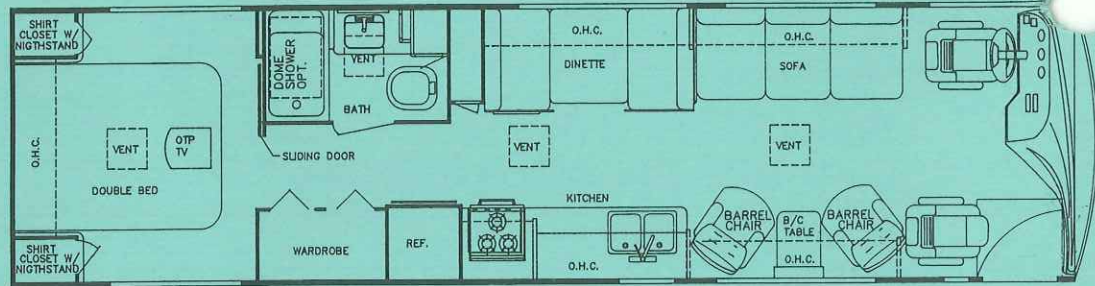
Model 8341 MXG



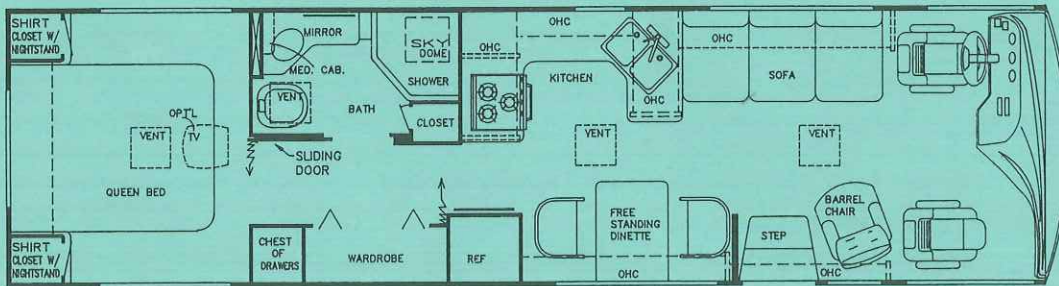
Model 8341 MXD



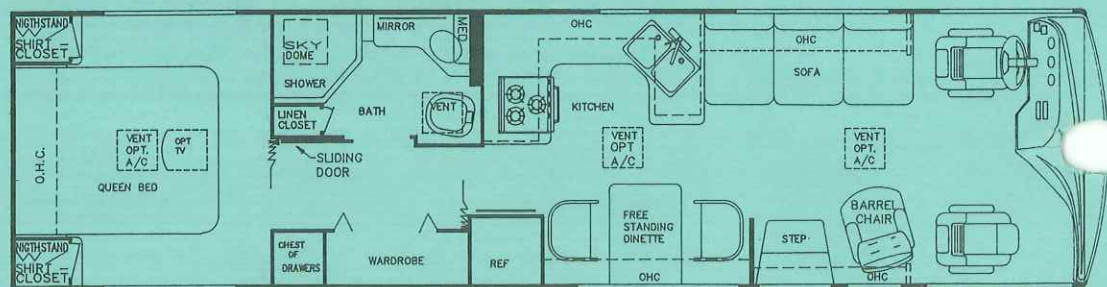
Model 8344 MXG



Model 8344 MXD



Model 8349 MXG



Model 8349 MXD

SUN STREAM XL

BY GULF STREAM®

Interior and Decor

- Natural Maple Cabinet Doors & Paneling
- Metal Drawer Guides w/Nylon Rollers
- Radius Cabinet & Wall Corners
- Windshield Privacy Drape
- Deluxe Furniture
- 3-Way Driver & Passenger Seats
- Deluxe Carpet W/Pad
- Coordinated Bedspread & Shams
- Lighted Closets
- Decorator Mirror
- Generous Overhead Storage
- Extra-Large Under-Bed Storage
- Day/Night Pleated Shades

Exterior and Construction

- Unified Steel Body Structure
- Radiused Laminated Rubber Roof w/Steel Rafters
- Low Profile Transition Radius Roof, Reinforced w/12-Gauge Truss-Styled Structure
- Automotive-Style Bumpers
- Electrically Actuated, Hinged Exterior Storage Doors
- Heated & Fully Enclosed Holding Tanks
- Super-Structure, Steel Truss-Type Floor System
- Laminated Floors w/Metal Under-Belly
- Laminated 2" Thick Floor & Wall Construction
- High-Density Block Foam Insulation Throughout
- Molded Roof Brick Insulation - Surrounds Ducted Roof A/C
- Sidewalls Lag-bolted Every 8" to Floor Structure
- Fully Welded Steel Firewall
- Laminated Fiberglass Sidewalls
- Automotive-Styled New Exterior
- Awning Rail
- Extraordinary Exterior Storage
- Panoramic Windshield
- Tinted Windshield & Windows
- Hinged Exterior Ladder

Electrical Systems

- Easy-Access Dual Battery System
- 12-volt, 45-Amp Converter
- Electric Supply Cord
- Electric Overload Protection
- Generator Compartment
- Automotive-Type, Color-Coded Wiring
- Lighted Entry & Aisle Lights
- Directional Reading/Map Lights
- Energy Management Unit
- Battery Disconnect

Bath and Water

- Dual Holding Tanks - Approx. 90 Gal.
- Fresh Water Tank - Approx. 50 Gal.
- Demand Water System
- City Water Hook-Up
- Dbl. Stainless Steel Sink (Kitchen)
- Sink Covers
- Tub/Shower Combination - Most Models
- Mirrored Medicine Cabinet
- Super-Flow Manifold Water Distribution System
- Deluxe Pedal Stool w/Sprayer
- Sky Dome
- Glass Shower Enclosure (8341, 8349)

Appliances

- 3-Burner High-Performance Range
- Lighted Power Range Hood
- Dbl. Door, 2-Way Refrigerator
- Large Microwave Oven (Opt.)

Heating & A/C

- Ducted Furnace w/Elect. Ignition - 35,000 BTU (Models: 8326, 8344) - 40,000 BTU (Models: 8340, 8341, 8349)
- Pre-Wired for Ducted Roof A/C

Spec.'s

- Wheel Base: 208" (Model 8340 XLG < 228")
- Exterior Length (approx.): 34' (Model 8326 - 32')
- Interior Height - approx. 6' - 8"
- Exterior Height - approx. 11' - 10" (w/A/C)
- Exterior Width - approx. 8' - 6"

Chassis (Gas Models)

- Super-Duty Ford w/460 V-8 Engine w/4-Speed Auto. Trans.
- Electronic Ignition
- Power Steering & Brakes
- High-Capacity Auto. Heater
- Tilt Steering Wheel

Chassis (Diesel Model)

- Spartan EC 2000, 18,000 lb. GVWR Chassis w/Cummins 6BT 5.9, 210HP @2500 RPM 520 ft.lb. Torque @1600 RPM Turbo-Charged Rear Mounted Diesel Engine
- Allison AT-542 4-Speed Automatic Transmission
- Air Over Hydraulic 15" Dia. Front & Rear Disc Brakes w/Air Actuated, Spring-Applied Parking Brake
- Tag Axle System (8341 Gas)
- 230 HP @ 2500 RPM, 605 ft. lb. Torque @ 1700 RPM, Turbo-Charged Rear Mounted Diesel Engine (w/6-Speed Allison World Transmission) *Optional*

Deluxe Standard Features

- Exclusive Gulf Stream Special Handling Package (Diesel Only)
- Auto Dash Air Conditioner
- Auto Cruise Control
- Wheel Covers
- AM/FM Cassette w/4 Spkrs.
- Monitor Panel
- Auto. Emergency Start Switch
- Power Vent in Commode
- Converter w/Battery Charger
- Auxiliary Batteries
- Generator Ready
- 115 lb. LP Tank (85 lb. on Gas)
- 19" Color TV in Front Overhead
- Carbon Monoxide Detector
- 6 Gal. DSI Water Heater
- TV Antenna, Amp, Booster & Jacks
- LP Gas Leak Detector
- Radial Tires
- Floor Safe
- Driver & Passenger Floor Mats

For further information and available floorplan options, contact your local dealer or Gulf Stream Coach, Inc. Gulf Stream Coach, Inc. reserves the right to make changes in prices, colors, materials, components and specifications and to discontinue models at any time without notice or obligation. Gulf Stream Coach, Inc. assumes no responsibility for any error in type or print reproduction of specifications or floorplans in this brochure.

1P 10M 4/95

© 1995 Gulf Stream Coach, Inc. - Nappanee, Indiana

Your Dealer



Gulf Stream Coach, Inc.

P.O. Box 1005 • Nappanee, IN 46550

IF YOU WANT A COACH THAT'S BUILT AS WELL AS A GULF STREAM...

1. Seamless Rubber Roof For Greater Energy Efficiency and Dependability.

2. Luan Decking for Additional Strength.

3. Molded E.P.S. Brick Insulation Provides Consistent Insulative Value As Well As Superior Dimensional Rigidity.

4. One-Piece Formed Aluminum Air Conditioning Duct, Completely Surrounded By Polystyrene Insulation.

5. Bubble-Wrapped Foil Insulation Provides Superior Insulation.

6. Rugged Welded Steel Tube Roof Framing.

7. Soft Touch Ceiling Fabric for Added Sound Insulation.

8. Aluminum Cove Molding.

9. Bubble-Wrapped Foil Insulation Minimizes Thermal Transfer.

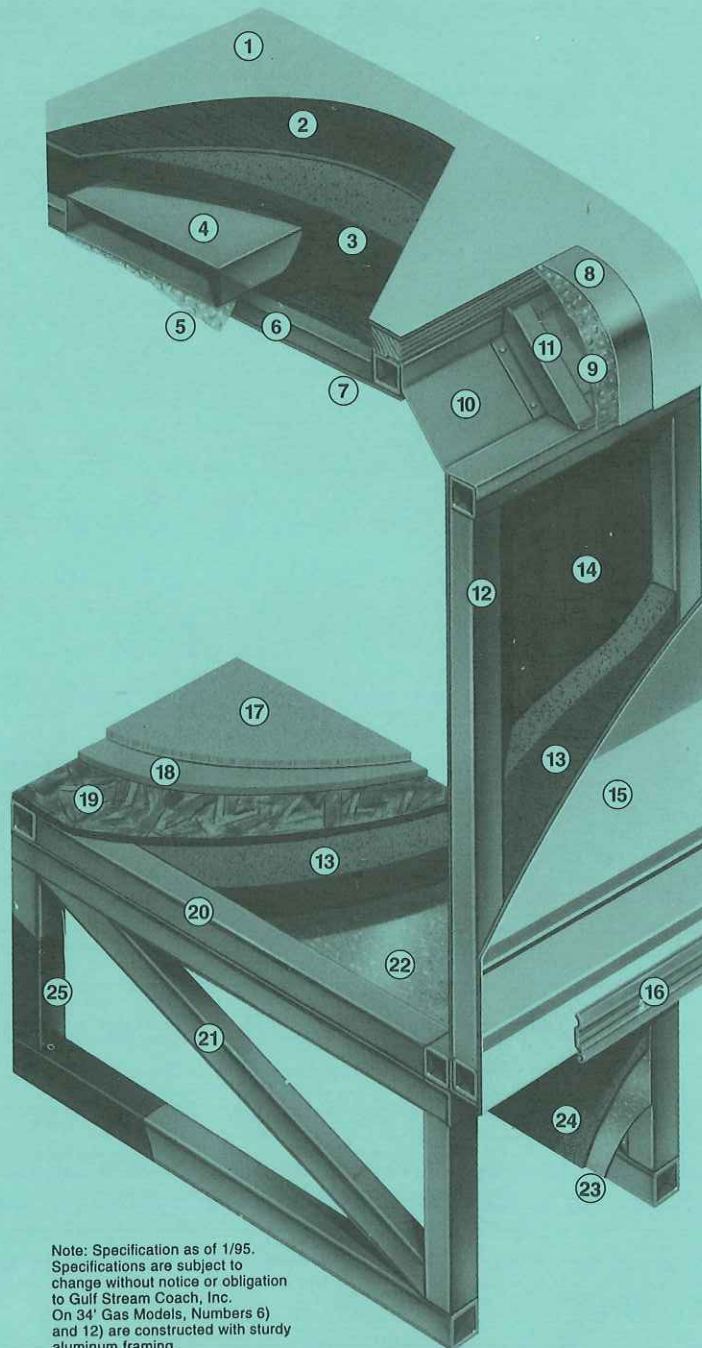
10. Rugged Roll-Formed Steel Roof-to-Sidewall Transition Member Insures Structural Integrity and Stability.

11. Die-Stamped Steel Transition Member Gusseting Provides Greater Strength and Structural Integrity.

12. Rugged Heavy-Gauge Steel Tubing, Fixture Welded to Form the Sidewall Framing.

13. High-Density E.P.S. Insulation Provides Superior Laminating and Bonding Characteristics and Insures Greater Energy Efficiency.

14. Interior Wall Panels Securely Laminated to Steel Framed Sidewall.



Note: Specification as of 1/95. Specifications are subject to change without notice or obligation to Gulf Stream Coach, Inc. On 34' Gas Models, Numbers 6) and 12) are constructed with sturdy aluminum framing.



15. "Fiberspan" Fiberglass Exterior Body Surface Vacuum Laminated to Steel Sidewall Framing for Lasting Beauty and Durability.

16. Aluminum Trunk Door Hinge Extrusion Provides A Tight Seal Discouraging Air or Water Infiltration.

17. High-Quality Stain-Resistant Carpeting Available in Designer-Coordinated Colors.

18. Extra-Thick Padding Under Carpet Provides Extra Comfort and Increases Carpet Durability.

19. Continuous Structurewood Floor Decking Laminated to Steel Floor Structure Assures a Quiet, Long-Lasting, Rigid Floor

20. Heavy-Gauge Steel Tube Framing, Fixture Welded for Extra Strength and Stability.

21. Heavy-Gauge Steel Tube Framing, Fixture Welded Floor Truss System Provides the Strongest Motorhome Foundation in the Industry.

22. Seamless Layer of Galvanized Steel Securely Laminated to the Steel Floor Framing.

23. Galvanized Steel Used to Form Each Storage & Holding Compartment.

24. Durable All-Weather Carpeting Completes Each Accessible Storage Compartment, Providing Extra Protection for Luggage and Valuables.

25. Rust-Prohibitive Paint Coating Applied to All Steel Framing Assures Corrosion and Rust Protection.

IT'S GOING TO HAVE TO BE A GULF STREAM!