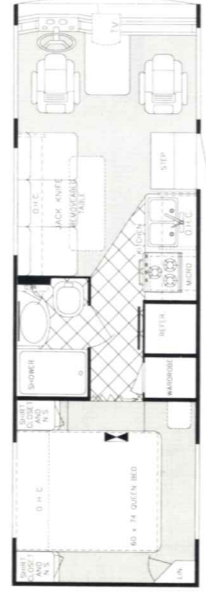


CONQUEST

BY GULF STREAM

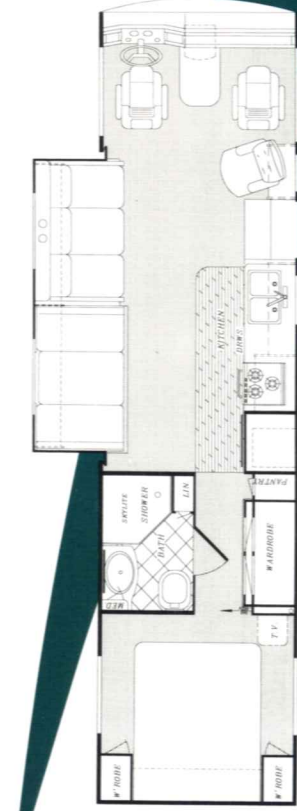
2000



Model 250 DH



Model 314 DH



Model 325 DH

CONQUEST

BY GULF STREAM

Interior & Decor

- Self-Edged & Radius-Cornered Countertops
- Oak Knife Holder in Kitchen Countertop
- Custom Padded Dash w/ Illuminated Gauges
- Windshield Privacy Drape
- Designer Cloth Cockpit Seats
- Upgrade Deluxe Carpet w/Pad
- Deluxe Quality Furniture
- 3-Way Driver Seat
- Decorative Picture at Dinette
- Generous Overhead Storage
- Extra Large Under Bed Storage
- Mid Door Carpeted Stepwell Cover
- Window Valances

Exterior & Construction

- **"Cradle of Strength" Construction:**
 - Tubular Metal Cage Construction
 - Welded Steel Truss Sub-Floor System
- Vacuum-Bond Laminated Sidewalls
- Block Foam Insulation in Roof & Sidewalls
- Heated & Fully-Enclosed Holding Tanks
- Tri-Mark Ext. Storage Door Latches & Locks
- Radius Entry Door
- Smooth Fiberglass Exterior
- Automotive Style Aluminum Front Grill
- Tinted Windshield and Windows
- Outstanding Steel-Formed Exterior Storage
- Deluxe Outside Mirrors
- Seamless Rubber Roof

Electrical Systems

- Easy-Access Dual Battery System
- 12-Volt, 45-Amp Converter
- Electric Supply Cord
- Electric Overload Protection
- Generator Compartment
- Automotive-Type, Color-Coded Wiring
- 12-Volt Battery Disconnect

Bath & Water

- Demand Water System
- City Water Hook-Up
- Double Stainless Steel Sink
- Tub/Shower combination
- Marine Toilet
- Gravity Drains on Fresh Water Lines
- Skydome in Shower/Bath

SPECIFICATIONS

| MODEL | 250DH | 314DH | 325DH |
|--------------------------------|--------|--------|--------|
| FORD CHASSIS: | V-10 | V-10 | V-10 |
| Wheelbase | 158" | 190" | 208" |
| GVWR (lbs.) | 15,700 | 15,700 | 18,000 |
| Front Gross Axle Weight Rating | 6,000 | 6,000 | 7,000 |
| Rear Gross Axle Weight Rating | 11,000 | 11,000 | 11,000 |
| WORKHORSE CHASSIS: | 454 | 454 | N/A |
| Wheelbase | 158" | 190" | N/A |
| GVWR (lbs.) | 12,300 | 14,800 | N/A |
| Front GAWR | 4,800 | 5,500 | N/A |
| Rear GAWR | 7,500 | 10,000 | N/A |
| *Exterior Length | 25'-8" | 31'-5" | 32'-7" |
| *Exterior Height with A/C | 11'-3" | 11'-3" | 11'-3" |
| Exterior Width | 94" | 94" | 94" |
| Interior Height | 78" | 78" | 78" |
| Interior Width | 91" | 91" | 91" |
| *FreshWater Tank (Gal.) | 50 | 50 | 50 |
| *Grey Holding Tank (Gal.) | 50 | 50 | 50 |
| *Black Holding Tank (Gal.) | 50 | 50 | 50 |
| Water Heater w/DSI | 6 gal. | 6 gal. | 6 gal. |
| LP Gas Tank (lbs.) | 65 | 65 | 65 |
| Fuel Tank (Ford/Workhorse) | 75/40 | 75/60 | 75 |
| Furnace (BTU's) | 25,000 | 35,000 | 35,000 |

For further information, contact your local dealer or Gulf Stream. Gulf Stream Coach, Inc. reserves the right to make changes in prices, colors, materials, components and specifications and to discontinue models at any time without notice or obligation. Gulf Stream Coach, Inc. assumes no responsibility for any error in type or print reproduction of specifications or floorplans in this brochure.

* Approximate and subject to change without notice.

Heating, Ventilation & A/C

- 35,000 BTU Ducted Furnace w/Elect. Ign.
- Pre-Wired for Roof A/C

Appliances

- 3-Burner High-Performance Range
- Lighted, Power Range Hood
- 2-Door, 2-Way Refrigerator

Deluxe Standard Features

- 19" Color TV w/Remote
- Microwave Oven
- 6 Gal. Elect. Ign. Water Heater
- TV Antenna w/Amp and Boost & 2 Jacks
- AM/FM Cassette Stereo w/4 Speakers
- Monitor Panel
- Generator Ready
- Converter w/Battery Charger
- Auto Start Switch

Chassis

- Workhorse - 454 CID V-8 Engine w/Electronically Shifted 4-Speed Auto. Trans.
- FORD - Super Duty w/Triton V-10 and 4-Speed Automatic Transmission (Opt.)
- Electronic Ignition
- Power Steering and Brakes
- High Capacity Automotive Heater & A/C w/R134 Environmental Refrigerant
- Tilt Steering Wheel
- Cruise Control

Your Dealer:



P.O. Box 1005 • Nappanee, IN 46550

1-800-765-8787, ext. 3288

Visit Our Web Site at:

WWW.GULFSTREAMCOACH.COM