

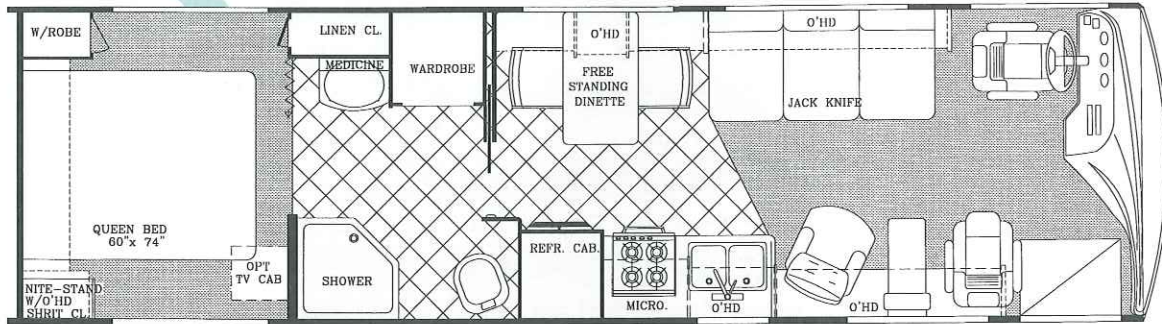
7/94

SUN SPORT

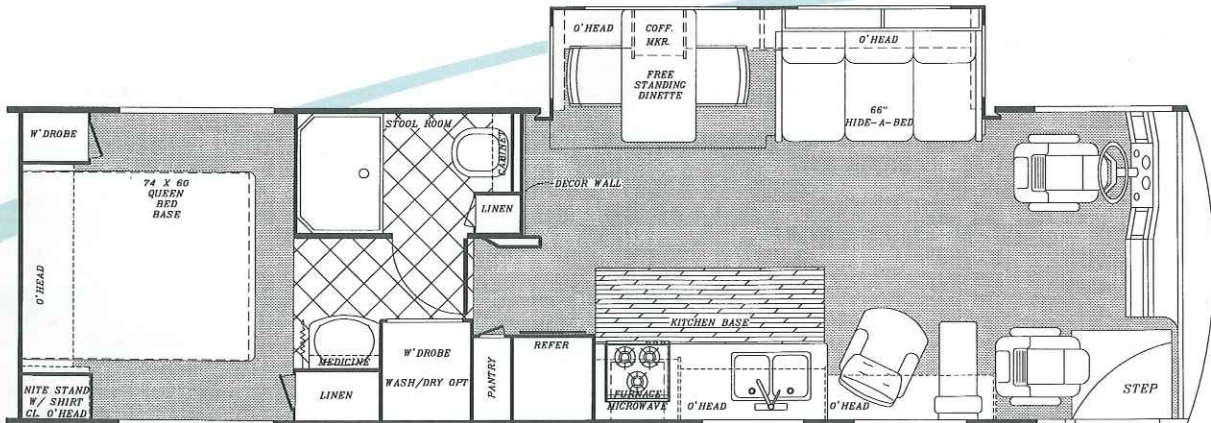


2000

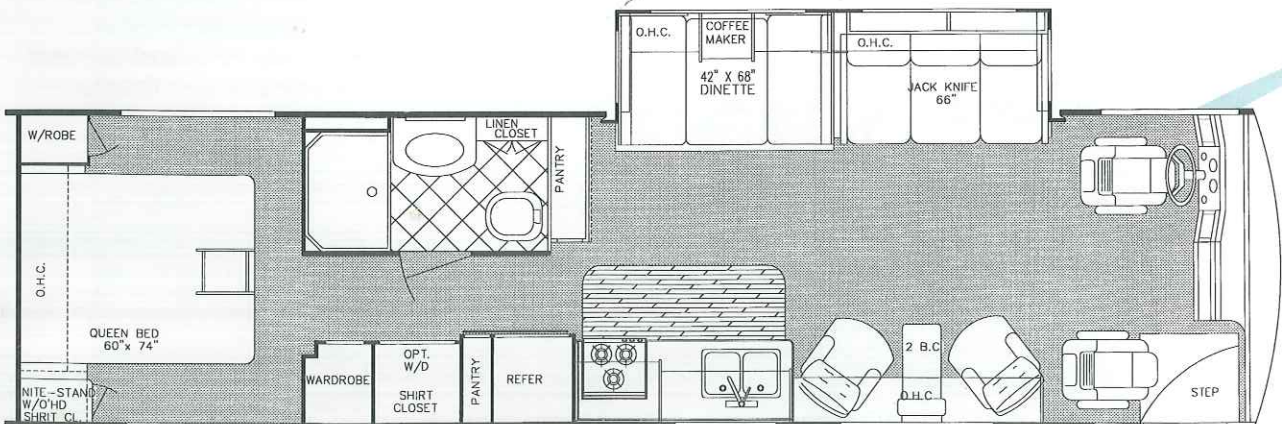
DIESEL MODELS



Model 8293 (Approx. 31'-4", 101" wide)



Model 8294 (Approx. 33'-8", 101" wide)



Model 8342 (Approx. 34'-8", 101" wide)



Interior & Decor

- Natural Oak Cabinet Doors
- 22" Metal Drawer Guides w/Nylon Rollers.
- Silverware Drawer and Drawer Front
- Residential Sized Cabinets and Overheads
- Windshield Privacy Drape
- Deluxe Furniture
- 3-Way Driver & Passenger Seats
- Deluxe Carpet w/Pad
- Coordinated Bedspread & Pillow Shams
- Lighted Closets
- Decorator Mirror (where available)
- Generous Overhead Storage
- Day/Night Pleated Shades

Exterior & Construction

- **"Cradle of Strength" Construction:**
 - Welded Steel Sub-Floor Truss System
 - Insulated Floors w/Virtually Seamless Weyerhaeuser Structurwood Decking
 - Vacuum-Bond Laminated 2" Thick Sidewall Construction w/Seamless Mende Fiberglass
- High-Density Block Foam Insulation Throughout Sidewalls, Roof & Floor
- Radiused Laminated Rubber Roof w/Tubular Metal Rafters
- Molded Roof Brick Insulation in Roof, Surrounding Ducted Roof A/C Vents
- Heated & Fully Enclosed Holding Tanks
- Automotive-Style Bumpers
- Generous Pass-Through Basement Storage, Including a Full-Width Rear Trunk Area
- Hinged Exterior Storage Doors
- Tri-Mark Exterior Storage Compartment Latches & Locks
- Fully Welded Steel Firewall
- Below Floor Storage Area's are Constructed of Galvanized Steel (not plywood or plastic)
- Deluxe Exterior Paint Graphics w/Tape Accent

Electrical Systems

- Easy-Access Dual Battery System
- 12-volt, 45-Amp Converter
- Electric Supply Cord
- Electric Overload Protection
- Automotive-Type, Color-Coded Wiring
- Lighted Entry & Aisle Lights
- Directional Reading/Map Lights
- Battery Disconnect
- Pre-Wired for VCR

Heating, Ventilation & A/C

- Ducted Furnace w/Elect. Ignition (40,000 BTU's)
- Pre-Wired for Ducted Roof A/C

DIESEL MODELS	8293	8294	8342
SPARTAN CHASSIS:	EXP2001	EXP2001	ALPINE ST
ENGINE (HP)	210	210	275
Wheelbase	172"	190"	208"
GVWR (lbs.)	19,000	19,000	23,000
Front Gross Axle Weight Rating	7,000	7,000	8,000
Rear Gross Axle Weight Rating	12,000	12,000	15,000
*Exterior Length	31'-4"	33'-8"	34'-8"
*Exterior Height with A/C	11'-11"	11'-11"	11'-11"
Exterior Width	101"	101"	101"
Interior Height	80"	80"	80"
Interior Width	97"	97"	97"
*FreshWater Tank (Gal.)	75	50	90
*Grey Holding Tank (Gal.)	50	50	50
*Black Holding Tank (Gal.)	50	50	50
Water Heater w/DSI	6 gal.	6 gal.	10 gal.
LP Gas Tank (lbs.)	85	85	85
Fuel Tank (Gal.)	80	80	80
Furnace (BTU's)	40,000	40,000	40,000

* Approximate and subject to change without notice.

For further information, contact your local dealer or Gulf Stream. Gulf Stream Coach, Inc. reserves the right to make changes in prices, colors, materials, components and specifications and to discontinue models at any time without notice or obligation. Gulf Stream Coach, Inc. assumes no responsibility for any error in type or print reproduction of specifications or floorplans in this brochure. TP 30M

Bath & Water

- Demand Water System
- City Water Hook-Up
- Kitchen Sink Cover
- Residential Rectangular Shower (most models)
- Mirrored Medicine Cabinet
- Super-Flow Manifold Water Dist. Sys.
- Deluxe Pedal Stool w/Sprayer
- Sky Dome Over Shower
- Glass Shower Enclosure

Chassis

- Spartan EXP 2001, 19,000 lb. GVWR Chassis w/Cummins 6BT 5.9, 210HP @2500 RPM 485 ft.lb. Torque @1600 RPM Turbo-Charged Rear Mounted Diesel Engine (8293, 8294)
- Allison AT-542 4-Speed Aut. Trans.
- Air Over Hydraulic 15" Dia. Front & Rear Disc Brakes w/Air Actuated, Spring-Applied Parking Brake
- Full Air-Ride Suspension
- Spartan Alpine ST, 23,000 lb. GVWR Chassis w/Cummins 275 HP @ 2500 RPM, 660 ft. lb. Torque @ 1700 RPM, Turbo-Charged Rear Mounted Diesel Engine w/6-Speed Allison Transmission (8342 only)

Appliances

- 3-Burner High-Performance Range
- Lighted Power Range Hood
- Double Door, 2-Way Refrigerator

Deluxe Standard Features

- Auto Dash Air Conditioner
- Auto Cruise Control
- Stainless Steel Wheel Liners
- AM/FM Cassette w/4 Spkrs.
- Monitor Panel
- Stainless Steel Entry Handle
- Power Vent in Commode
- Converter w/Battery Charger
- Auxiliary Battery
- 19" Color TV in Front Overhead
- Carbon Monoxide Detector
- TV Antenna
- LP Gas Leak Detector
- Awning Rail

Popular Options

- Microwave Oven
- Exterior Radio/Cassette Ent. Center



P.O. Box 1005 • Nappanee, IN 46550