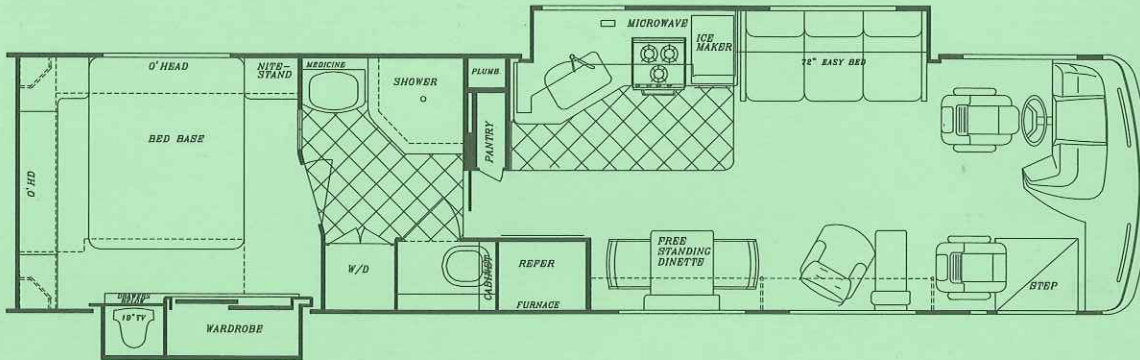


FRIENDSHIP

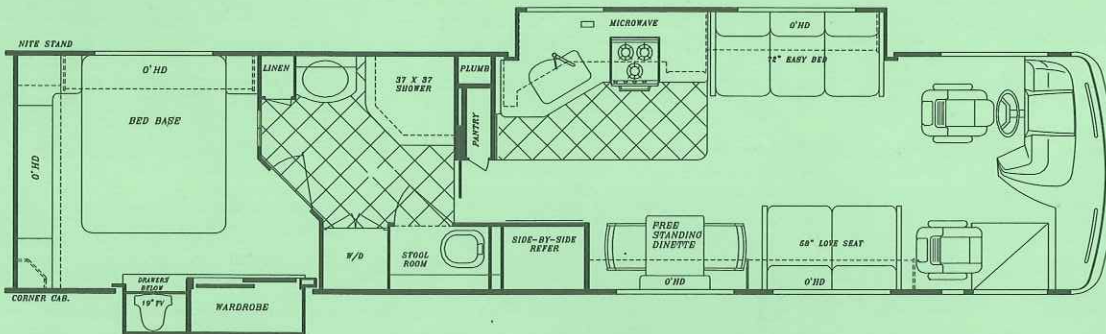
2001

DIESEL MODELS



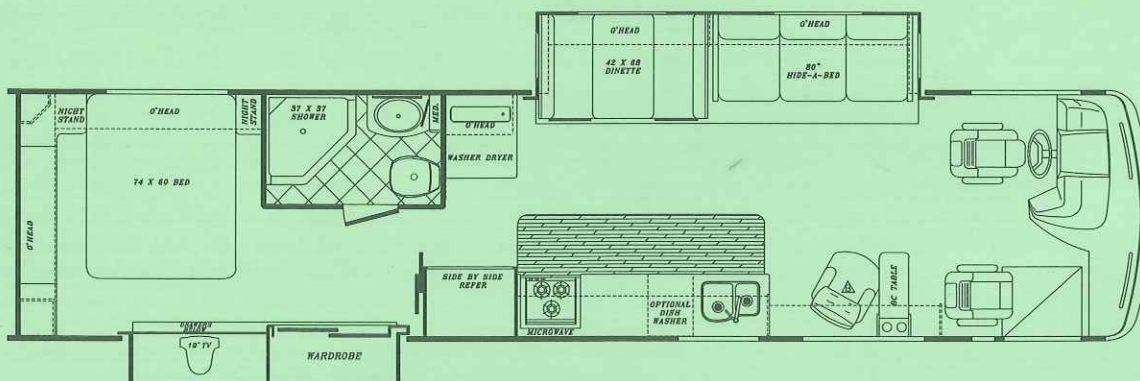
Engine (HP)	300
GVWR	24,000
Wheelbase	234"
Ext. Length	36'-8"
Ext. Height w/AC	12'-1"
Ext. Width	100"
Int. Height	80"
Int. Width	96"
Fresh	75 gal.
Grey	40 gal.
Black	40 gal.
Water Heater w/DSI	10 gal.
LP Gas Tanks	115 lbs.
Fuel Tank (Gal.)	100
Furnace BTU's	40,000

Model 8362



Engine (HP)	330
GVWR	31,000
Wheelbase	252"
Ext. Length	40'-0"
Ext. Height w/AC	12'-1"
Ext. Width	100"
Int. Height	80"
Int. Width	96"
Fresh	100 gal.
Grey	75 gal.
Black	75 gal.
Water Heater w/DSI	10 gal.
LP Gas Tanks	150 lbs.
Fuel Tank (Gal.)	150
Furnace BTU's	25&40

Model 8401



Engine (HP)	330
GVWR	31,000
Wheelbase	252"
Ext. Length	40'-0"
Ext. Height w/AC	12'-1"
Ext. Width	100"
Int. Height	80"
Int. Width	96"
Fresh	100 gal.
Grey	75 gal.
Black	75 gal.
Water Heater w/DSI	10 gal.
LP Gas Tanks	150 lbs.
Fuel Tank (Gal.)	150
Furnace BTU's	25&40

Model 8407



SPECIFICATION INFORMATION

FRIENDSHIP



INTERIOR & DECOR

- High Gloss Walnut Hardwood Interior
- Fabric-Covered Shelving in Cabinets
- Deep Overhead Cabinets in Slide-Outs
- Deluxe Solid Surface Countertops Throughout
- Deluxe Flexsteel Furniture
- Flexsteel Pilot & Co-Pilot Seats 6-Way Power Pedestals (Opt.)
- Deluxe Stain-Resistant Carpet w/Pad
- Hand Laid Ceramic Tile Floor Bath
- Wood Plank Floor in Kitchen
- Day/Night Shades Throughout
- Deluxe Privacy Drapes for Cockpit
- Coordinated Bedspreads & Shams
- Expandable Dinette w/Solid Surface Top and (2) Fabric Chairs
- Color Coordinated Deluxe Window Boxes
- Queen Size Bed w/Deluxe Innerspring Mattress

APPLIANCES

- 3-Burner High-Output Recessed Range w/Covers
- 2-Door, 2-Way Refrigerator
- Microwave/Convection Oven w/Re-circulation Kit
- Lighted Power Range Hood
- 19" Color TV In Dash
- 13" Color TV in Bedroom
- VCR in Front Overhead (Opt.)
- TV Antenna w/Amp, Boost and 2 Jacks
- CB Antenna
- Gas Leak Detector
- Carbon Monoxide Detector

EXTERIOR & CONSTRUCTION

- Large One-Piece Panoramic Windshield
- Radiused Fiberglass Roof
- Back-Up Camera w/Weatherproof Cover
- Deluxe Front Door w/Screen & Kick plate
- 5,000 lb. Trailer Hitch
- Chrome Package:**
 - Chrome Front Spotlight w/Power Controls
 - Chrome Front Air Horns
 - Chrome-Like Kick plate at Front Entry Door
 - Chrome Exhaust Tips
 - Chrome Exterior Vents for Radiator & Engine Compartment Doors
- Strong 1-1/2" x 1-1/2" Tubular Metal Const.
- Laminated Tubular Steel Floor w/Metal Underbelly and Weyerhaeuser Decking
- Super-Structure Steel Sub-Floor Sys. (3"x1-1/2")
- Laminated 2" Thick Floor & Wall Construction
- 1-1/2" Block Foam Insulation in Floor & Walls
- Steel Sidewall-to-Roof Transition Member
- Hinged & Insulated Ext. Storage Doors
- High-Density Block Foam Insulation Throughout
- Thick 4-1/2" Block Foam Roof Insulation
- Side-to-Side, Carpeted and Lighted Exterior Pass-Through Storage
- Full Fiberglass Front and Rear Caps
- Fiberglass Integrated Bumpers
- Full Body Undercoating
- Super-Slick Gel-Coat Fiberglass Exterior
- Hydraulic Slide Power Unit w/Manual Override

HEATING, VENTILATION & A/C

- Thermopane Windows Throughout
- Dual 13,500 BTU Ceiling Ducted A/C
- Overhead Defrost Fans
- In-Dash A/C and Heater w/Electronic Driver and Passenger Controls
- Heated & Insulated Basement with Enclosed Holding Tanks
- Insulated Ducted Furnace w/Electronic Ignition

BATH & WATER

- Super-Flow Manifold Water Distribution System
- Deep Solid Surface Kitchen Sink w/Flexible Sprayer
- Gold Neo-Angle Shower Surround
- Sky Dome in Shower Area
- Mirrored Medicine Cabinet
- Storage Cabinet in Commode Area
- Porcelain Commode w/Spray Nozzle
- Washer/Dryer Prep
- Solid Surface Sink Covers in Kitchen
- Water Purification System
- Holding Tank Power Flush System

DELUXE STANDARD FEATURES

- Auto Dash Air Conditioner
- Auto Cruise Control
- Electric Step Cover
- Monitor Panel in Range Hood
- 150 lb. LP Tank (40' models)
- Tinted Windshield & Windows

POPULAR OPTIONS

- Deluxe Exterior Paint Upgrade
- 4-Door Flush-Mount Refrigerator
- Satellite Dish System
- Satellite in Motion System
- Fully Automatic Hydraulic Coach Levelers
- Storage Compartment Slide Trays
- Exterior Entertainment Center
- Combo Vented Washer/Dryer
- Icemaker in Kitchen Cabinet
- Icemaker in 4-Door Refrigerator
- 50 lb. Freezer on Slide Tray in Basement
- 7.5 Onan Quiet Diesel Generator / or 7.5 Generac

CHASSIS

- SPARTAN ST Chassis w/5.9 Cummins 300 HP Diesel Engine, 660 ft. lb. Torque, (8362)
- C-Channel Type, Raised-Rail Steel Chassis Frame
- Anti-Lock Brake System
- Air Brakes w/Pure Air Plus Heated Air Dryer
- Full Air-Ride Suspension w/Auto Leveling System
- Allison 6-Speed Electronically Shifted Auto. Trans.
- Freightliner Custom Chassis with 330 HP CAT @2200 RPM @ 860 ftlb. torque w/Allison 6 Speed Electronically Shifted Automatic Transmission IFS Not Available (8401, 8407)

For further information and available floorplan options, contact your local dealer or Gulf Stream Coach, Inc. Gulf Stream Coach, Inc. reserves the right to make changes in prices, colors, materials, components and specifications and to discontinue models at any time without notice or obligation. Gulf Stream Coach, Inc. assumes no responsibility for any error in type or print reproduction of specifications or floorplans in this brochure. SP-11/00-2M © 2000 Gulf Stream Coach, Inc. - Nappanee, Indiana



P.O. Box 1005 • Nappanee, IN 46550
www.gulfstreamRV.com

*NOTE: GCWR's are limited by hitch weight capacities used by the manufacturer. Gulf Stream installs a 5,000 lb. hitch. Check your Spartan Owners Manual for additional towing weight capacities.