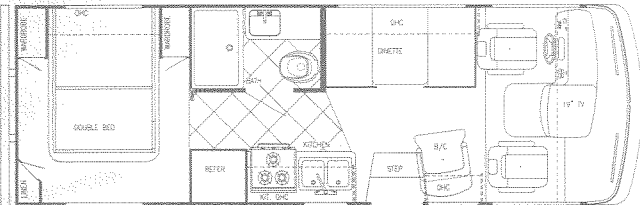


1/60

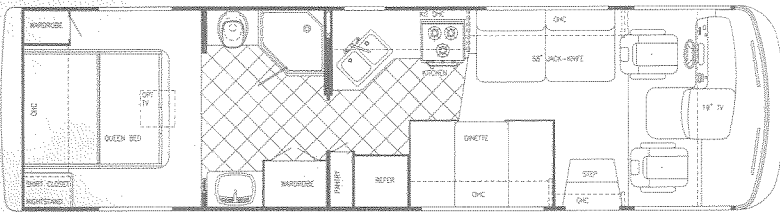
ULTRA Supreme

2001



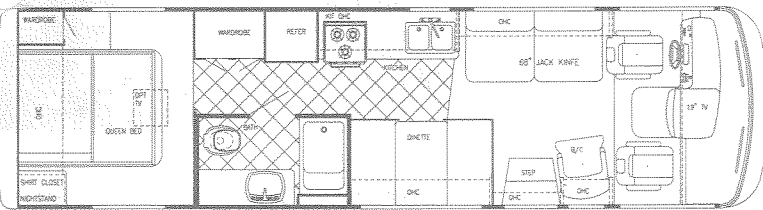
Chassis	Workhorse	Length	24'-6"
Fuel	60 gal	Height	11'-11"
GVWR	12,300	Width	101"
Black	50 gal	LP Gas Tank	85 lbs.
Grey	50 gal	Furnace	35,000 BTUs
Fresh	59 gal	Water Heater	6 gal w/DSI

Model 8240



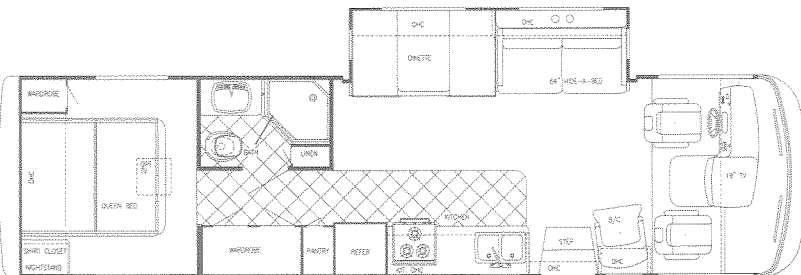
Chassis	Workhorse	Length	24'-6"
Fuel	60 gal	Height	11'-11"
GVWR	12,300	Width	101"
Black	50 gal	LP Gas Tank	85 lbs.
Grey	50 gal	Furnace	35,000 BTUs
Fresh	59 gal	Water Heater	6 gal w/DSI

Model 8301



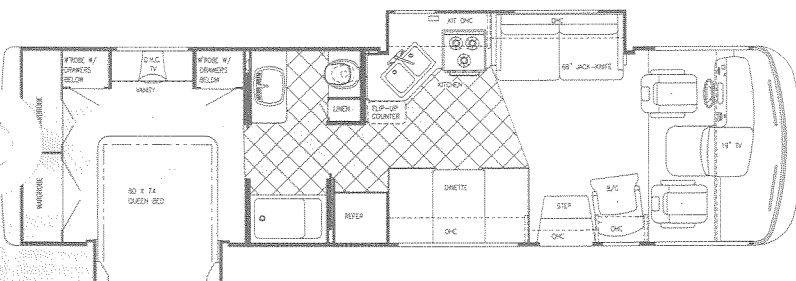
Chassis	Workhorse	Length	32'-0"
Fuel	60 gal	Height	11'-11"
GVWR	15,000	Width	101"
Black	50 gal	LP Gas Tank	85 lbs.
Grey	50 gal	Furnace	35,000 BTUs
Fresh	59 gal	Water Heater	6 gal w/DSI

Model 8314



Chassis	Workhorse	Length	33'-4"
Fuel	75 gal	Height	11'-11"
GVWR	18,000	Width	101"
Black	50 gal	LP Gas Tank	85 lbs.
Grey	50 gal	Furnace	35,000 BTUs
Fresh	59 gal	Water Heater	6 gal w/DSI

Model 8325



Chassis	Workhorse	Length	33'-6"
Fuel	75 gal	Height	11'-11"
GVWR	18,000	Width	101"
Black	50 gal	LP Gas Tank	85 lbs.
Grey	50 gal	Furnace	35,000 BTUs
Fresh	59 gal	Water Heater	6 gal w/DSI

Model 8327

ULTRA Supreme 2001



- Interior & Decor -

- Hardwood Cabinet Stiles and Doors
- Soft Touch Ceiling
- Self-Edged & Radius-Cornered Countertops
- Oak Knife Holder in Kitchen Countertop
- Windshield Privacy Drape
- Designer Cloth Cockpit Seats
- 3-Way Driver Seat
- Generous Overhead Storage
- Extra Large Under Bed Storage
- Mid Door Carpeted Stepwell Cover
- Window Valances
- Pre-Wired for Roof A/C

- Exterior & Construction -

- "Cradle of Strength" Construction:
 - Tubular Metal Cage Construction
 - Welded Steel Truss Sub-Floor System
- Vacuum-Bond Laminated Sidewalls
- Block Foam Insulation in Roof & Sidewalls
- Heated & Fully-Enclosed Holding Tanks
- Bus-Style Storage Doors
- Tri-Mark Ext. Storage Door Latches & Locks
- Radius Entry Door
- Smooth Fiberglass Exterior
- Automotive Style Aluminum Front Grill
- Tinted Windows
- Outstanding Steel-Formed Exterior Storage
- Seamless Rubber Roof
- Aluminum Framed Furniture

- Appliances -

- 3-Burner High-Performance Range
- Lighted, Power Range Hood
- 2-Door, 2-Way Refrigerator

- Electrical Systems -

- On Dash Emergency Start
- Easy-Access Dual Battery System
- 12-Volt, 45-Amp Converter
- Electric Supply Cord
- Electric Overload Protection
- Automotive-Type, Color-Coded Wiring
- 12-Volt Battery Disconnect

- Bath & Water -

- Demand Water System
- City Water Hook-Up
- Double Residential-Style Sink
- Tub/Shower combination (8327, 8314)
- Marine Toilet
- Gravity Drains on Fresh Water Lines
- Neo-Angle Shower w/Glass Surround (8325, 8301)

- Deluxe Standard Features -

- 19" Color TV w/Remote
- Microwave Oven
- TV Antenna w/Amp and Boost & 2 Jacks
- Hydraulic Leveling System (8325, 8327)
- AM/FM Cassette Stereo w/4 Speakers
- Generator Ready
- Converter w/Battery Charger
- Auto Start Switch

- Chassis -

- Workhorse - 454 CID V-8 Engine
- w/Electronically Shifted 4-Speed Auto. Trans.
- Electronic Ignition
- Power Steering and Brakes
- High Capacity Automotive Heater & A/C
- w/R134 Environmental Refrigerant
- Tilt Steering Wheel
- Cruise Control

- Popular Options -

- FORD - Super Duty w/Triton V-10 and 4-Speed Automatic Transmission
- Wheel Covers
- Exterior Painted Graphics
- Rear A/C
- Back-Up Monitor
- Hydraulic Leveling System (8301, 8314)
- Exclusive Bedroom Ceiling Overhead TV
- Computer Work Station
- Onan or Generac Generator



P.O. Box 1005 • Nappanee, IN 46550

* All weights and measures are approximate and subject to change without notice. For further information, contact your local dealer or Gulf Stream. Gulf Stream Coach, Inc. reserves the right to make changes in prices, colors, materials, components and specifications and to discontinue models at any time without notice or obligation. Gulf Stream Coach, Inc. assumes no responsibility for any error in type or print reproduction of specifications or floorplans in this brochure. SP - 11/00 - 2M