

2001

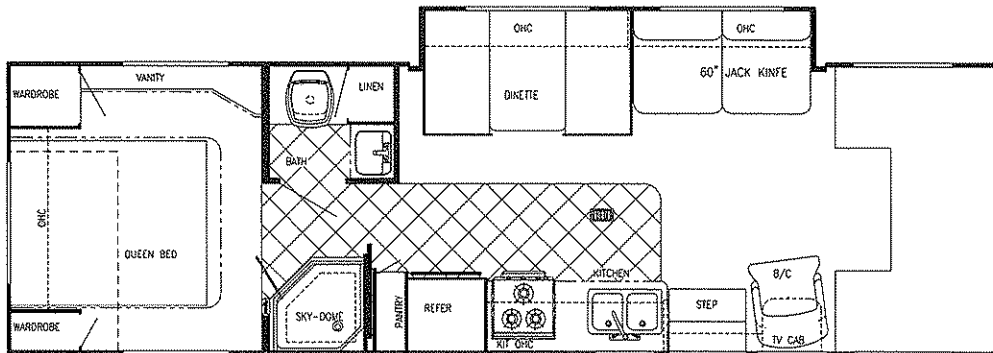


YELLOWSTONE

Class C
Motorhomes

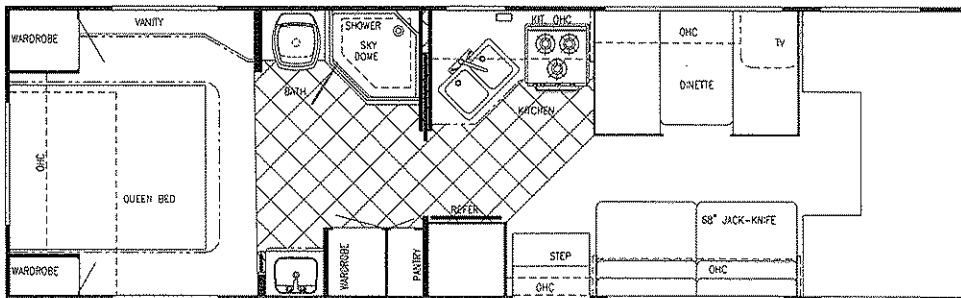


COUNTRY CLUB



Model W6316Y

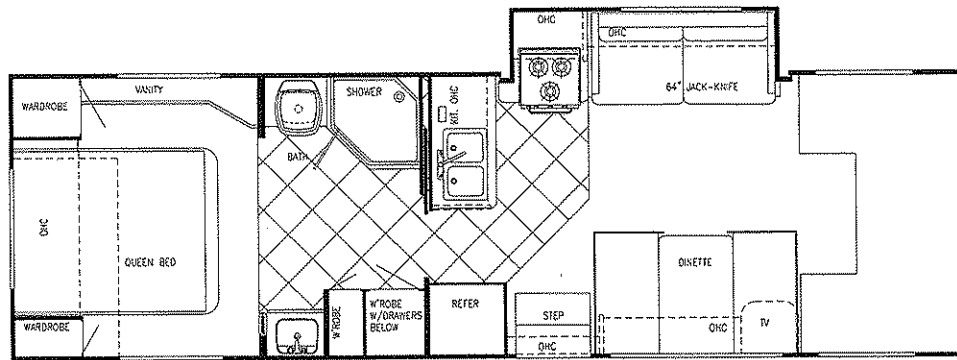
Chassis	Ford V-10	Length	31'-5"	Black	36 gal	LP Gas Tank	62 lbs.
Fuel	55 gal	Height	11'-3"	Grey	36 gal	Furnace	30,000 BTUs
GVWR	14,050	Width	101"	Fresh	34 gal	Water Heater	6 gal



MODEL W6301Y (Sofa Opt, Barrel Chairs Opt, Twin Beds or Bunks Opt.)

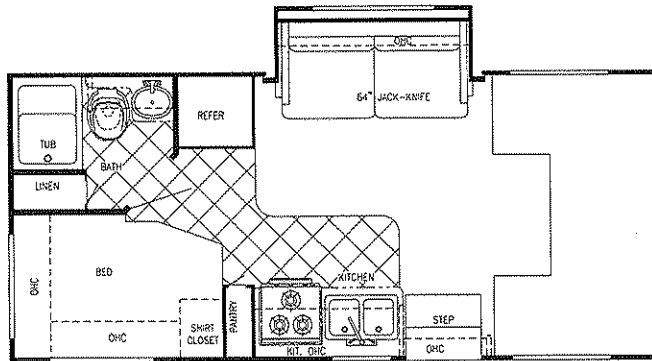
Chassis	Ford V-10	Length	30'-8"	Black	36 gal	LP Gas Tank	62 lbs.
Fuel	55 gal	Height	11'-3"	Grey	36 gal	Furnace	30,000 BTUs
GVWR	14,050	Width	101"	Fresh	34 gal	Water Heater	6 gal

NEW



Model W6304Y (Chair w/table, Twin Beds or Bunks Opt.)

Chassis	Ford V-10	Length	30'-3"	Black	36 gal	LP Gas Tank	62 lbs.
Fuel	55 gal	Height	11'-3"	Grey	36 gal	Furnace	30,000 BTUs
GVWR	14,050	Width	101"	Fresh	34 gal	Water Heater	6 gal



MODEL W6212Y

Chassis	Ford V-10	Length	21'-10"	Black	30 gal	LP Gas Tank	62 lbs.
Fuel	35 gal	Height	11'-3"	Grey	30 gal	Furnace	30,000 BTUs
GVWR	14,050	Width	101"	Fresh	32 gal	Water Heater	6 gal

Interior & Decor

- 6' - 5" Interior Height
- Natural Hardwood Stile Cabinetry
- Natural Oak, Raised Panel Mortise and Tenon Cabinet Doors (in galley)
- Queen Size Bed, Cab-Over
- 2-Way Driver & Passenger Seats
- Deluxe Carpet W/Pad Throughout
- Coordinated Bedspread & Shams
- Power Vent in Commode
- Generous Overhead Storage
- Mini Blinds in Kitchen
- Soft Touch Interior Ceiling Fabric
- Designer Interior Window Treatments
- Drink Tray (Ford)
- Sink Cover
- Oak Knife Holder
- Slide Out Cabover Bunk
- Acrylic Entry Door Assist Handle

Electrical Systems

- Easy-Store 30' Elect. Power Cord
- Lighted Basement Storage
- Double Overhead Reading Lights
- 110V Receptacles
- Generator prep
- Ground Fault Circuit Interrupter
- Outside Receptacle
- Auxiliary Battery
- Electronic Convertor w/Charger (45 Amp)
- Monitor Panel

Exterior & Construction

- High Quality Clear Coated Paint on Skirt
- Welded Aluminum Cage Construction
- High Density Block Foam Insulation in the Walls, Roof & Floor
- Super-Slick Laminated Fiberglass Ext.
- Radiused Laminated Rubber Roof w/ Heliarc-Welded Aluminum Rafters
- Exclusive Molded Roof Brick Insulation
- Tubular Steel, Laminated Floor w/Metal Underbelly
- Foamed, Sealed & Undercoated Subfloor
- Fiberglass Front and Rear Caps & Wings
- Full, Carpeted Basement Storage
- Expansive Radius Slider Windows
- Front Cab-Over Window
- Outside Grab Handle
- Porch Light
- Dead-Bolt on Entry Door
- Rubber Entry Step
- Spare Tire and Wheel
- Fully-Enclosed Water Tanks

Bath & Water

- Demand Water System
- City Water Hook-Up
- Tub/Shower Combination
- Bath Convenience Accessories
- Lavatory w/Base Cabinet Storage
- Water Bypass Valve

Appliances

- 3-Burner Range w/Oven
- Range Hood w/Monitor Panel
- Carbon Monoxide Detector
- Microwave
- 13,500 BTU Ducted Roof A/C

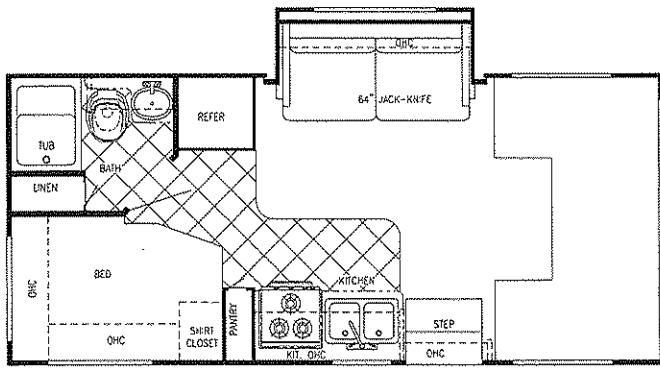
Popular Options

- Outside Entertainment Center
- Sliding Dual Battery Tray
- Battery Disconnects
- Heated and Remote Mirrors
- CD Player
- Side Cabover Entertainment Center
- Back-Up Monitor
- Chevy Chassis (6212 & 6316 Only)

Chassis

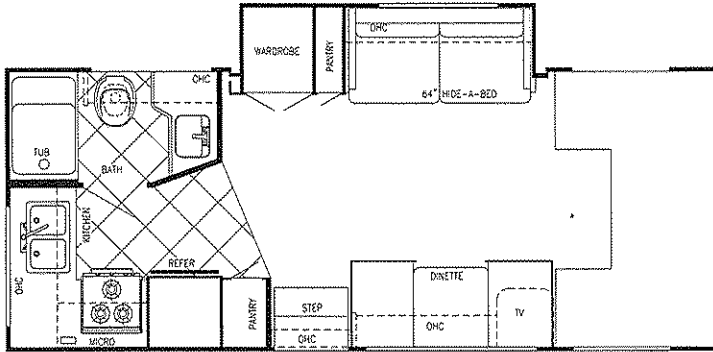
- 6.8L, V-10 Engine
- E-40 Super Duty Chassis
- 4 Speed Auto. Overdrive Trans.
- Tilt Wheel Steering
- Power Brakes & Steering
- Deluxe Heated & Remote Mirrors (Opt.)
- Power Locks and Windows
- AM/FM Stereo w/4 speakers
- Radial Tires
- Dual Air Bags
- Cruise Control
- FORD Turbo Diesel Chassis (Opt., N/A 6316)

YELLOWSTONE CAMPRI



Model W6212Z

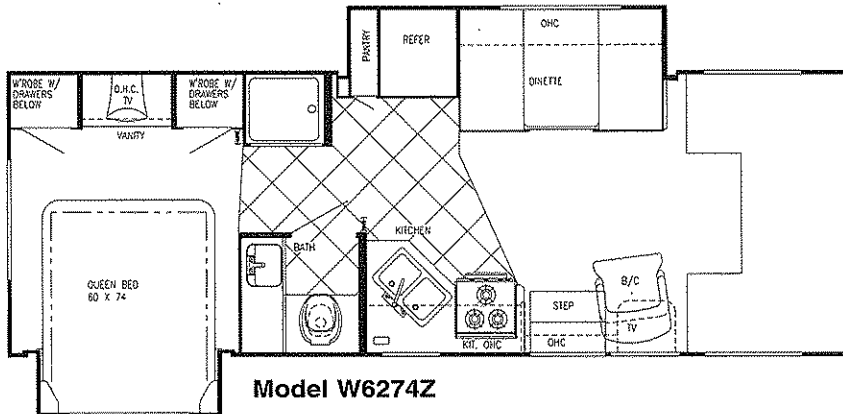
Chassis	Ford V-10	Length	21'-11"	Black	30 gal	LP Gas Tank	62 lbs.
Fuel	35 gal	Height	11'-3"	Grey	30 gal	Furnace	25,000 BTUs
GVWR	11,500	Width	101"	Fresh	32 gal	Water Heater	6 gal



NEW & IMPROVED

Model W6236Z

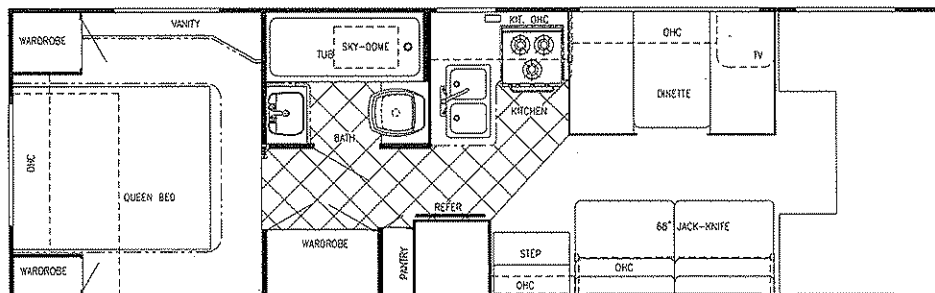
Chassis	Ford V-10	Length	24'-2"	Black	30 gal	LP Gas Tank	62 lbs.
Fuel	55 gal	Height	11'-3"	Grey	30 gal	Furnace	25,000 BTUs
GVWR	14,050	Width	101"	Fresh	32 gal	Water Heater	6 gal



NEW

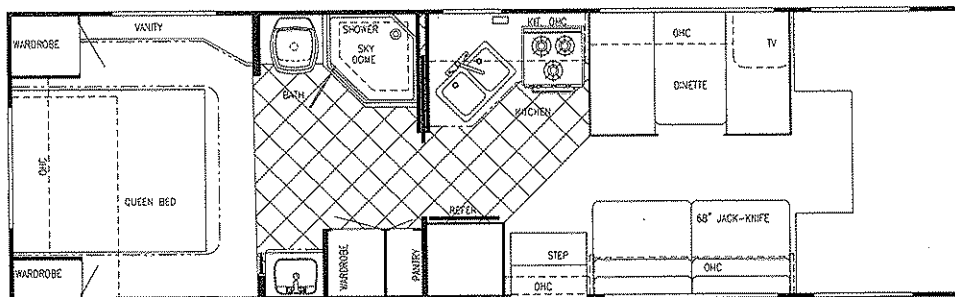
Model W6274Z

Chassis	Ford V-10	Length	26'-11"	Black	36 gal	LP Gas Tank	62 lbs.
Fuel	55 gal	Height	11'-3"	Grey	36 gal	Furnace	25,000 BTUs
GVWR	14,050	Width	101"	Fresh	34 gal	Water Heater	6 gal



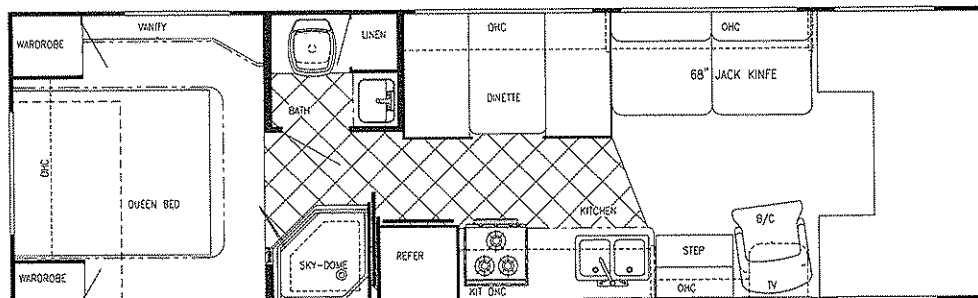
Model W6294Z (Sofa Opt, Barrel Chairs Opt, Twin Beds or Bunks Opt.)

Chassis	Ford V-10	Length	30'-1"	Black	36 gal	LP Gas Tank	62 lbs.
Fuel	55 gal	Height	11'-3"	Grey	36 gal	Furnace	30,000 BTUs
GVWR	14,050	Width	101"	Fresh	34 gal	Water Heater	6 gal



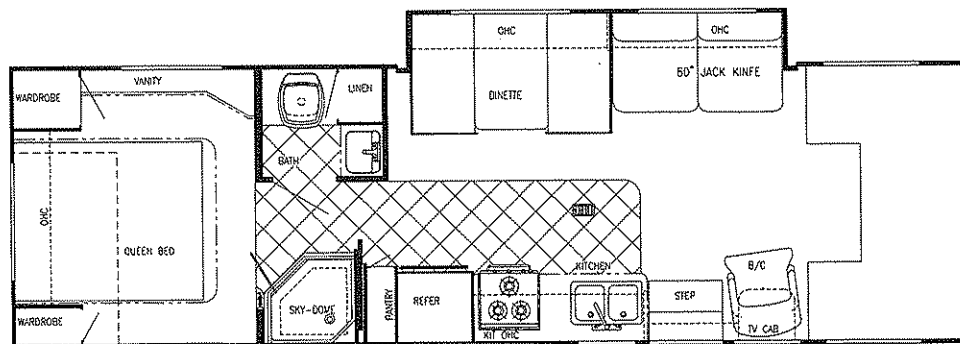
Model W6301Z (Sofa Opt, Barrel Chairs Opt, Twin Beds or Bunks Opt.)

Chassis	Ford V-10	Length	30'-8"	Black	36 gal	LP Gas Tank	62 lbs.
Fuel	55 gal	Height	11'-3"	Grey	36 gal	Furnace	30,000 BTUs
GVWR	14,050	Width	101"	Fresh	34 gal	Water Heater	6 gal



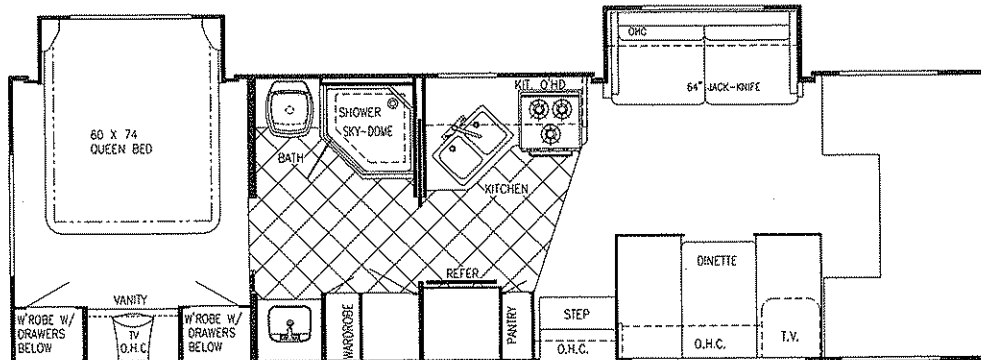
Model W6315Z

Chassis	Ford V-10	Length	30'-11"	Black	36 gal	LP Gas Tank	62 lbs.
Fuel	55 gal	Height	11'-3"	Grey	36 gal	Furnace	30,000 BTUs
GVWR	14,050	Width	101"	Fresh	34 gal	Water Heater	6 gal



Model W6316Z

Chassis	Ford V-10	Length	30'-11"	Black	36 gal	LP Gas Tank	62 lbs.
Fuel	55 gal	Height	11'-3"	Grey	36 gal	Furnace	30,000 BTUs
GVWR	14,050	Width	101"	Fresh	34 gal	Water Heater	6 gal



Model W6302Z (Sofa, Barrel Chairs, or Free-Standing Dinette Opt)

Chassis	Ford V-10	Length	31'-4"	Black	36 gal	LP Gas Tank	62 lbs.
Fuel	55 gal	Height	11'-3"	Grey	36 gal	Furnace	30,000 BTUs
GVWR	14,050	Width	101"	Fresh	34 gal	Water Heater	6 gal

STANDARD SPECIFICATIONS

Interior & Decor

- Approx. 6'-5" Interior Height
- Natural Hardwood Stile Cabinetry
- Natural Oak Frame Raised Panel Cabinet Doors (in galley)
- Privacy Curtain Cab
- Deluxe Carpet w/Pad
- Generous Overhead Storage
- 2-Way Driver & Passenger Seat
- Coordinated Bedspreads & Shams (most models)
- Decorator Curtains & Day/Night Shades w/Valances
- Interior Decorative Clock
- Rubber Entry Step
- Queen Size Bed, Cab-Over
- Power Vent in Commode
- Tub Surround
- Mini Blinds Kitchen
- Hydraulic-Operated Glide Out Room (slide out models)

Electrical Systems

- Easy Store 30' Elect. Power Cord
- Double Overhead Reading Lights
- 110 Volt Receptacles
- Ground Fault Circuit Interrupter
- Outside Receptacle
- TV Antenna w/Amp & Boost
- Auxilliary Battery
- Electronic Converter w/Charger (45 Amp)
- Generator Prep
- Monitor Panel

Exterior & Construction

- Welded Aluminum Cage Const.
- 4-Ply Laminated Walls, Roof & Floor
- Smooth Fiberglass Exterior
- Radiused Laminated Rubber Roof w/ Heliarc-Welded Aluminum Rafters, and Exclusive Molded Roof Brick Insulation w/Bubble Wrap Duct System (N/A 6212)
- Hydraulic Pump Override System
- Tubular Steel Floor
- Laminated Floor w/ Metal Underbelly
- Foamed, Sealed & Undercoated
- Full Basement Storage (most models)
- Distinctive Exterior Graphics
- Expansive Radius Slider Windows
- Hose Storage Bumper
- Front Cab-Over Window
- Outside Grab Handle
- Chrome Bumper Cover (most models)
- Aluminum Running Boards
- Dead Bolt on Entry door
- Spare Tire and Carrier
- Roof Rack & Ladder
- Bumper Jack (Opt. most models)

Appliances

- 3-Burner Range w/Oven
- Large 2-Way Dbl. Door Refer.
- Microwave Installed
- 6 Gal. Elect. Ign. Water Heater
- 13,500 BTU Roof Air

Bath & Water

- Demand Water System
- City Water Hook-Up
- Tub/Shower Combo
- Lavatory w/Base Cabinet Storage
- Bath Convenience Accessories
- Water Bypass Valve
- Skydome in Shower (most models)

Popular Options

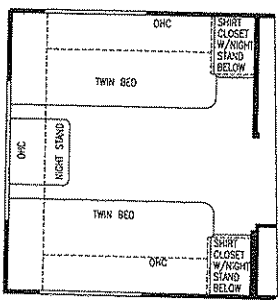
- Outside Entertainment Center
- Exterior Paint
- Sliding Battery Tray
- Battery Disconnects
- Heated and Remote Mirrors
- Cabover Entertainment Center
- Side Cabover Entertainment Center
- Slide-Out Room Awning
- Solar Charge 3 Speed Fantastic Fan In Bedroom
- CD Player

Chassis

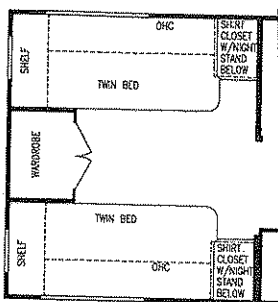
- 6.8L, V-10 Engine
- E-30 Chassis (Up to 22')
- E-40 Super Duty Chassis (23' & above)
- 4 Speed Auto. Overdrive Trans.
- Tilt Wheel Steering
- AM/FM Stereo w/4 Speakers
- Power Brakes & Steering
- Deluxe Exterior Mirrors
- Radial Tires
- Cruise Control
- FORD Turbo Diesel Chassis (Opt., N/A 6302, 6294, 6274, 6212)
- Dual Air Bags

BEDROOM OPTIONS

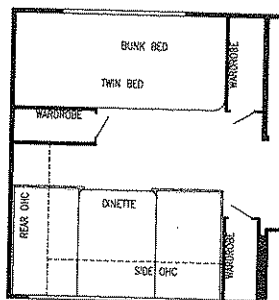
Twin Beds (Nightstand)



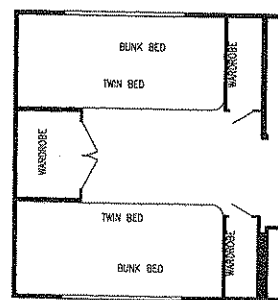
Twin Beds (Wardrobe)



Bunk Dinette



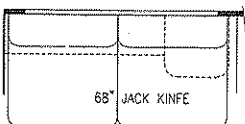
Bunk Beds



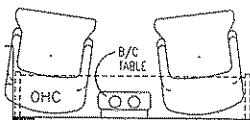
*These Options are applicable as noted on Conquest Classic, Limited Edition and Sport Models

LIVING ROOM OPTIONS

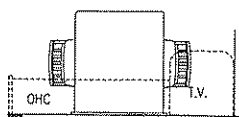
Jack Knife Sofa



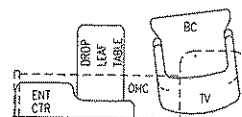
Barrel Chairs



Free-Standing Dinette

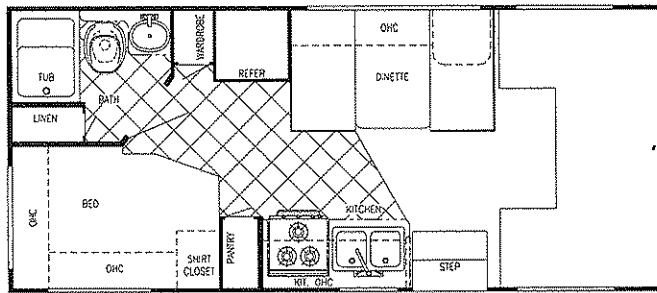


Chair w/table



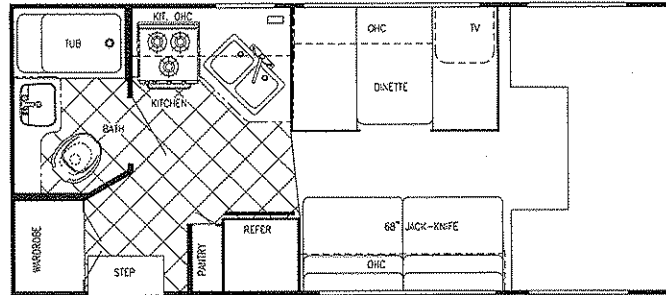
YELLOWSTONE CAMPRI

YELLOWSTONE SPORT



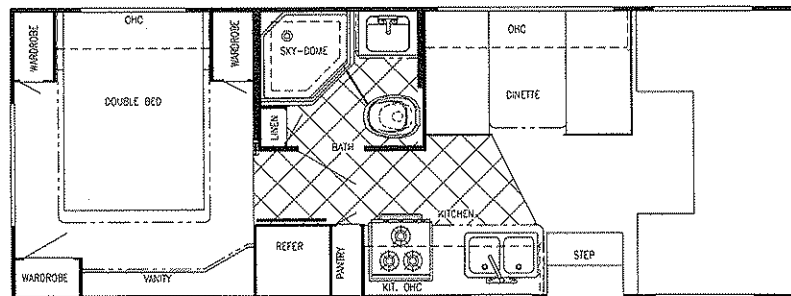
Model W6210X (Sofa Opt)

Chassis	Chevy	Length	22'-4"	Black	30 gal	LP Gas Tank	48 lbs.
Fuel	35 gal	Height	11'-1"	Grey	30 gal	Furnace	25,000 BTUs
GVWR	12,300	Width	101"	Fresh	32 gal	Water Heater	6 gal



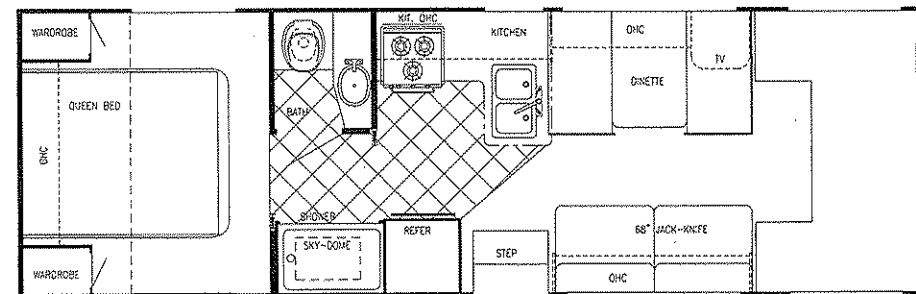
Model W6211X (Sofa Opt)

Chassis	Chevy	Length	22'-4"	Black	30 gal	LP Gas Tank	48 lbs.
Fuel	35 gal	Height	11'-1"	Grey	30 gal	Furnace	25,000 BTUs
GVWR	12,300	Width	101"	Fresh	32 gal	Water Heater	6 gal



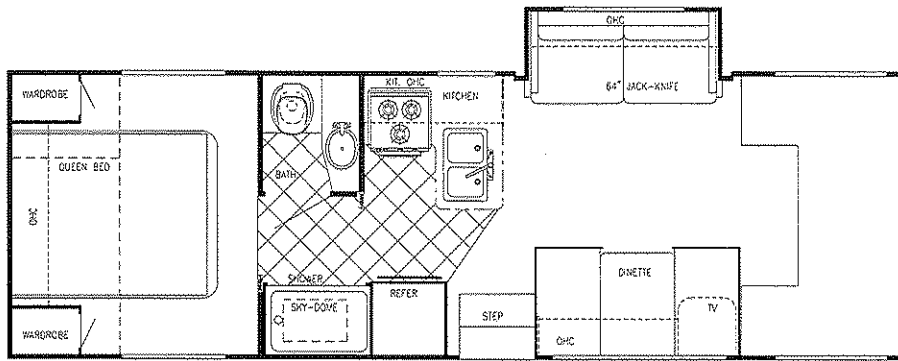
Model W6253X (Sofa Opt)

Chassis	Chevy	Length	26'-11"	Black	36 gal	LP Gas Tank	48 lbs.
Fuel	60 gal	Height	11'-1"	Grey	36 gal	Furnace	25,000 BTUs
GVWR	12,300	Width	101"	Fresh	34 gal	Water Heater	6 gal



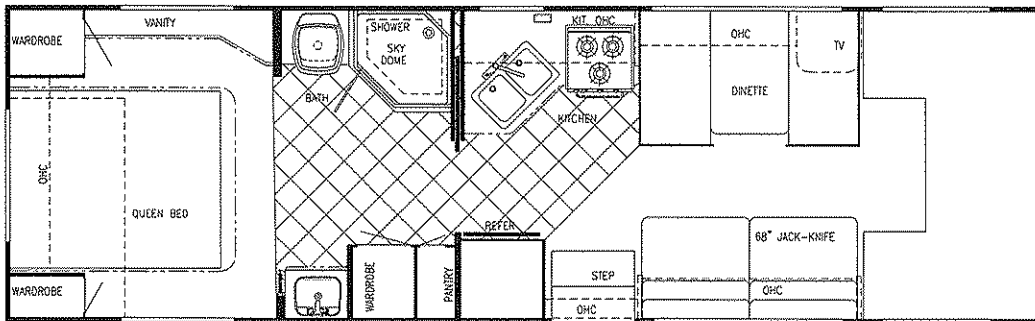
Model W6280X (Sofa Opt, Barrel Chairs Opt, Twin Beds or Bunks Opt.)

Chassis	Chevy	Length	29'-3"	Black	36 gal	LP Gas Tank	48 lbs.
Fuel	60 gal	Height	11'-1"	Grey	36 gal	Furnace	25,000 BTUs
GVWR	12,300	Width	101"	Fresh	34 gal	Water Heater	6 gal



Model W6281S (Sofa or Barrel Chairs Opt, Twin Beds or Bunks Opt.)

Chassis	Ford V-10	Length	29'-3"	Black	36 gal	LP Gas Tank	48 lbs.
Fuel	55 gal	Height	11'-1"	Grey	36 gal	Furnace	25,000 BTUs
GVWR	14,050	Width	101"	Fresh	34 gal	Water Heater	6 gal



Model W6301X (Sofa or Barrel Chairs Opt, Twin Beds or Bunks Opt.)

Chassis	Ford V-10	Length	29'-3"	Black	36 gal	LP Gas Tank	48 lbs.
Fuel	55 gal	Height	11'-1"	Grey	36 gal	Furnace	25,000 BTUs
GVWR	14,050	Width	101"	Fresh	34 gal	Water Heater	6 gal

STANDARD SPECIFICATIONS

Interior & Decor

- 6'-8" Interior Height
- Stile Constructed Cabinetry
- Privacy Curtain Cab
- Deluxe Carpet w/Pad Throughout
- Generous Overhead Storage
- 2-Way Driver & Passenger Seat
- Coordinated Bedspreads & Shams (Opt. most models)
- Decorator Curtains & Shades w/Valances
- Queen Size Bed, Cab-Over
- Power Vent in Commode

Electrical Systems

- Easy Store 30' Elect. Power Cord
- Overhead Reading Lights
- 110-Volt Receptacles
- Ground Fault Circuit Interrupter
- Outside Receptacle
- TV Antenna w/Amp & Boost
- Auxiliary Battery
- Electronic Converter w/Charger (45 Amp)
- Generator Prep

Bath & Water

- Demand Water System
- City Water Hook-Up

- Tub/Shower Combo
- Lavatory w/Base Cabinet Storage
- Water Bypass Valve

Exterior & Construction

- Smooth Fiberglass Exterior
- Rear Ladder (Opt.)
- Chrome Bumper Cover
- Deluxe Awning (Opt.)
- Welded Aluminum Cage Const.
- 4-Ply Lam. Walls, Roof & Floor
- Laminated Rubber Roof w/Heliarc-Welded Aluminum Rafters
- Tubular Steel Floor
- Laminated Floor w/ Metal Underbelly
- Foamed, Sealed & Undercoated
- Generous Above-Floor Ext. Storage
- Generous Ext. Basement Storage
- Distinctive Exterior Graphics
- Expansive Radius Slider Windows
- Hose Storage Bumper
- Self Storing Entry Step
- Front Cab-Over Window (Opt.)
- Outside Grab Handle
- Porch Light
- Dead Bolt on Entry door
- Spare Tire and Carrier
- Mag-Look Wheel Covers

Appliances

- 3-Burner Range Top
- Power Range Hood
- Large 2-Way Refrigerator
- Microwave (Opt.)
- 13,500 BTU Roof Air
- LP Leak Detector
- Carbon Monoxide Detector
- Monitor Panel

Popular Options

- Ford Chassis (std. on 6281 only)
- LP Gas Oven
- Battery Disconnect
- Tub Surround
- Emergency Start Switch
- Aluminum Running Boards
- Exterior Paint (Classic, Limited Edition)

Chevy Chassis

- 4 Speed Automatic Overdrive Transmission
- Tilt Wheel Steering
- AM/FM Cassette w/4 Speakers
- Power Brakes & Steering
- Radial Tires
- Cruise Control
- Ford Turbo Diesel Chassis (Opt., N/A 6210, 6211, 6253, 6280)

YELLOWSTONE SPORT

Gulf Stream's Traditional CRADLE OF STRENGTH

Take the Time to Compare

1. Seamless Rubber Roof For Greater Energy Efficiency and Dependability.

2. Luan Decking for Additional Strength.

3. Molded, High Density EPS (Expanded PolyStyrene) Roof Brick Insulation - Provides Consistent Insulative Value As Well As Superior Dimensional Rigidity.

4. One-Piece Formed Aluminum Air Conditioning Duct, Completely Surrounded By EPS Insulation.

5. Bubble-Wrapped Foil Insulation Provides Superior Insulation and Helps Prevent Condensation.

6. Rugged Welded Tubular Aluminum Roof Framing.

7. Rugged Heavy-Gauge Tubular Aluminum, Fixture Welded to Form the Sidewall Framing.

8. High-Density EPS Insulation Provides Superior Laminating and Bonding Characteristics and Insures Greater Energy Efficiency.

9. Interior Wall Panels Securely Laminated to Sidewall Framing.

10. "Mende" Fiberglass Exterior Vacuum-bond Laminated to Sidewall Framing for Lasting Beauty and Durability. (Super Slick - Classic)

11. High-Quality Stain-Resistant Carpeting Available in Designer Coordinated Colors.

12. Extra-Thick Padding Under Carpet Provides Extra Comfort and Increases Carpet Durability.

13. Seamless Structurewood Floor Decking Laminated to Steel Floor Structure Assures a Quiet, Long-Lasting, Rigid Floor and comes with a 10-Year Warranty.

14. Heavy-Gauge Tubular Steel Framing, Fixture Welded for Extra Strength and Stability.

15. Heavy-Gauge Tubular Steel Framed, Fixture Welded Floor Truss System Provides the Strongest Class C Foundation in the Industry.

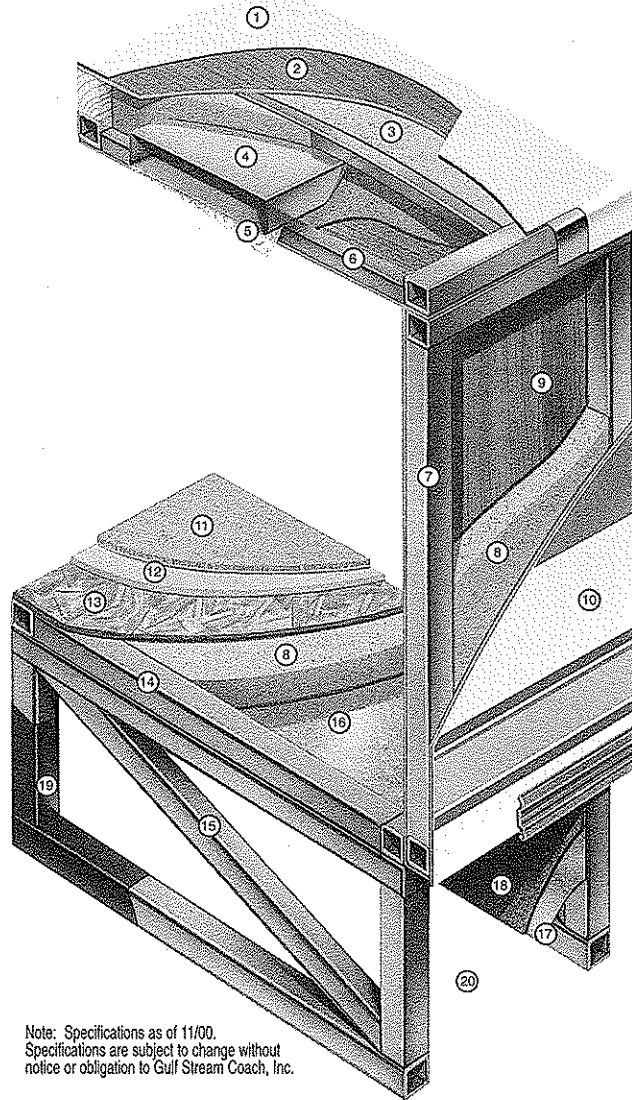
16. Seamless Layer of Galvanized Steel Securely Laminated to the Steel Floor Framing.

17. Galvanized Steel Used to Form Each Storage & Holding Compartment.

18. Durable All-Weather Carpeting Completes Each Accessible Storage Compartment, Providing Extra Protection for Luggage and Valuables.

19. Rust-Prohibitive Paint Coating Applied to All Steel Framing Assures Corrosion and Rust Protection.

20. The Industry's Strongest, Most Spacious Exterior Storage Compartments.



Note: Specifications as of 11/00.
Specifications are subject to change without notice or obligation to Gulf Stream Coach, Inc.



P.O. Box 1005 • Nappanee, IN 46550

* All weights and measures are approximate and subject to change without notice. For further information, contact your local dealer or Gulf Stream. Gulf Stream Coach, Inc. reserves the right to make changes in prices, colors, materials, components and specifications and to discontinue models at any time without notice or obligation. Gulf Stream Coach, Inc. assumes no responsibility for any error in type or print reproduction of specifications or floorplans in this brochure. SP-11/00-5M

Visit us on the Web
www.gulfstreamRV.com
1-800-765-8787, ext. 3288

GULF STREAM - BUILT TO LAST!