

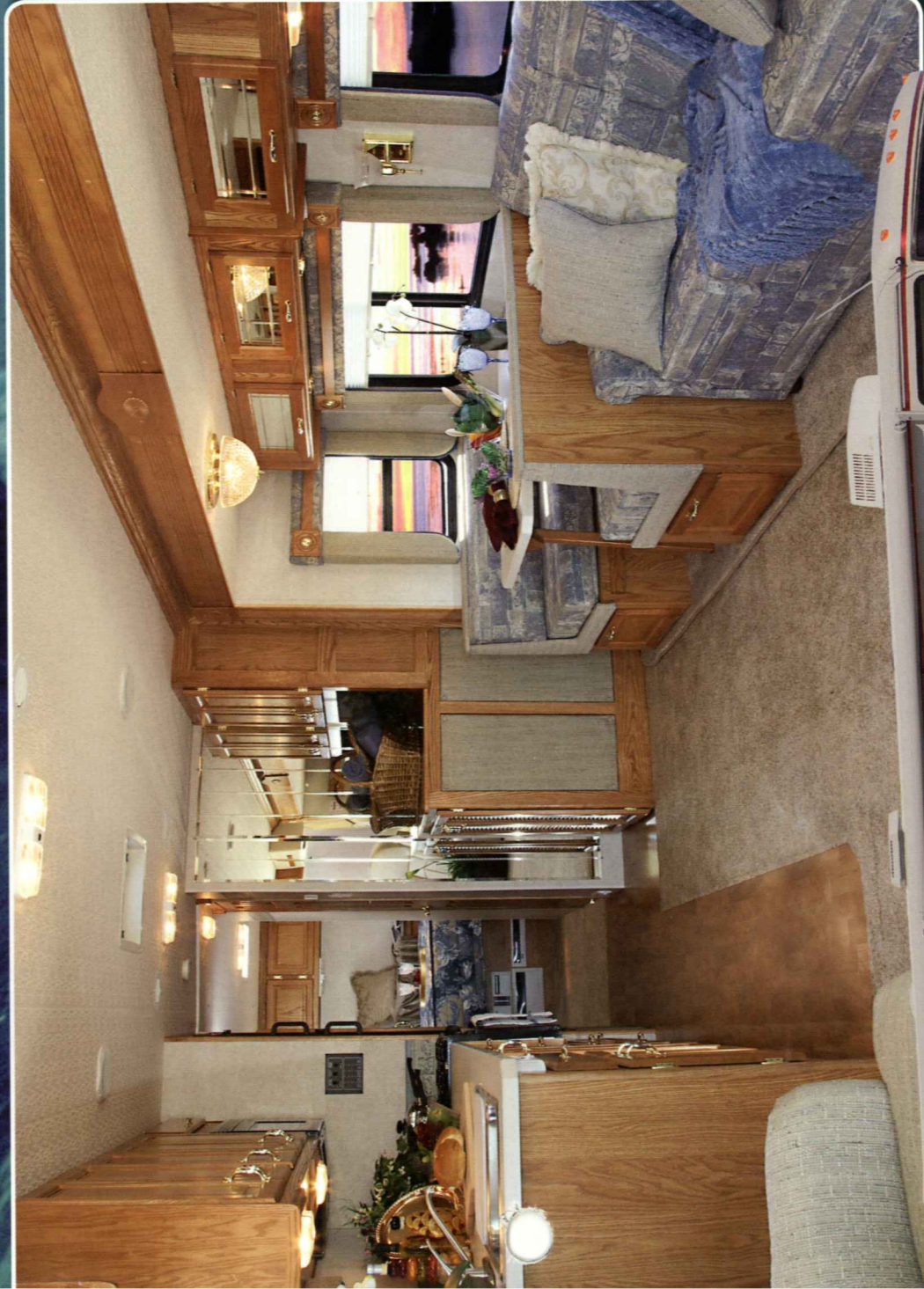
# CRESCENDO

2004 MOTORHOMES

GULF STREAM  
COACH, INC.

DIESEL MODEL CLASS A

**cre•scendo** (kri shen'dō') adj., *A powerful increase in force and intensity...*



*Discover The Intensity of Diesel Power*

# CRESCENDO

*Elegant Interior...*

The story begins with Gulf Stream's innovative product development team. The objective was defined:

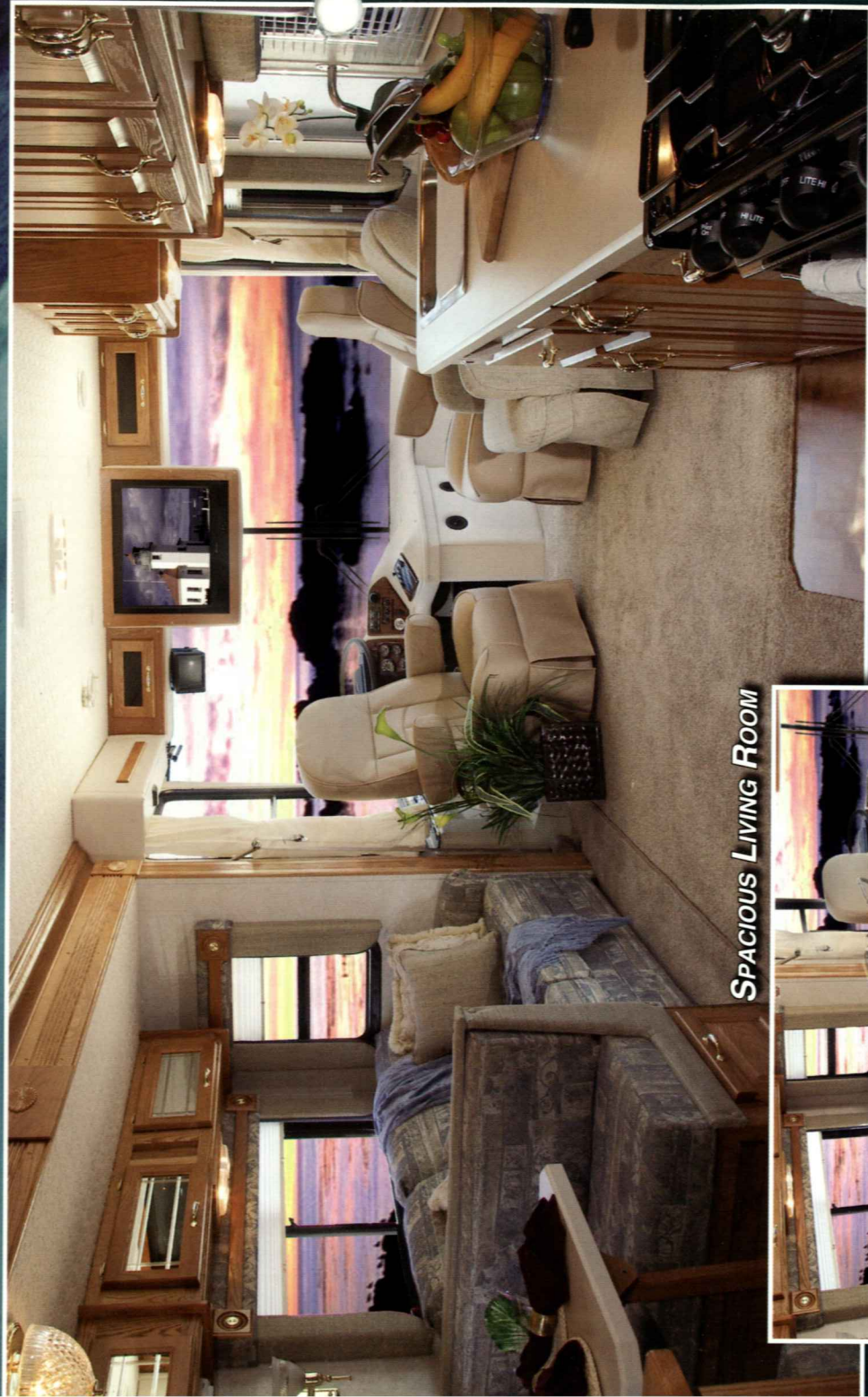
"Offer a 330 diesel motorhome with two slides, 36' in length with an elegant interior- at the very best price possible."

It is clear that diesel motorhomes perform better, longer and maintain their value far greater than gas-powered motorhomes.

They also cost much more...that is until now...

## INTRODUCING THE CRESCENDO

No corner was cut in the development of this revolutionary product. Lean manufacturing concepts were applied to remove all wasteful processes. In addition, we have worked with our vendors to achieve large savings and we have passed them along to the RVer.



**SPACIOUS LIVING ROOM**



## ONLY THE BEST

Observe the large, deep super-slide with overhead cabinets and windows. The slide room floor is flush, which adds to the beauty and use. In addition, only solid hardwood cabinetry with residential style two tone handles and hardware throughout. We feature Corian™ edge laminate countertops. Only brand name materials are used in this one of a kind diesel pusher.

*Spacious Accommodations...*

**GULF STREAM**  
COACH, INC.



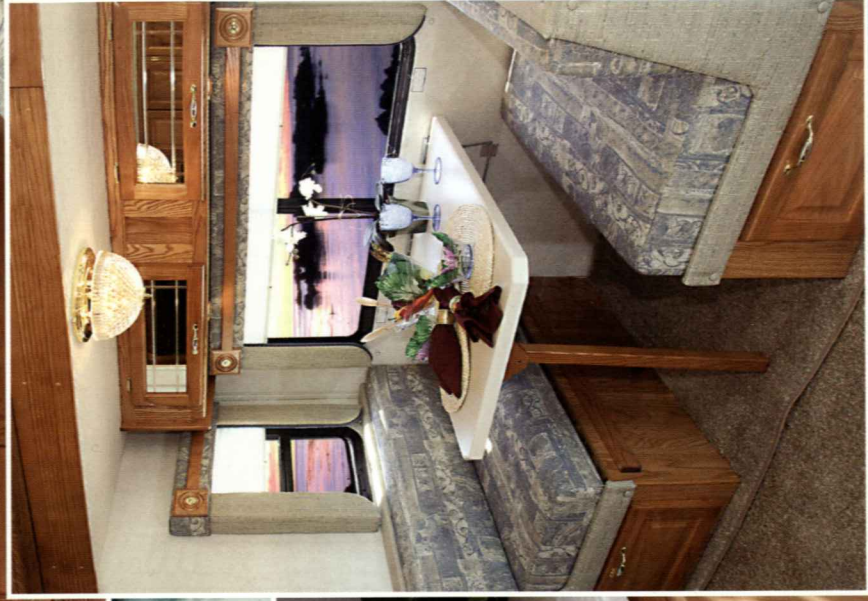
**TWO TONE  
HARDWARE**



**T  
KITCHEN**

One of the best features of the Crescendo is the large kitchen.

Notice the stainless steel sinks, large overhead cabinets, three-burner range with oven, microwave and spacious countertops for easy utilization.



# CRESCENDO Masterful Bedroom...



## THE BEDROOM

There are several awesome features in the Crescendo's Master Suite. First, there is unbelievable space in front of the large wardrobe closet. This gives you an open area to get ready for the day. There is a huge mirror door for your use. A large 25" TV is posted in an easy-to-view location to assure your entertainment.



FLIP TOP STORAGE BENCH



*Luxurious Bath...*



**JUST AS THE TERM CRESCENDO DENOTES, GULF STREAM HAS PICKED UP THE INTENSITY WITH THIS NEW DIESEL PUSHER.**



**WASHER / DRIER**

Even with the best price on the diesel market, the Crescendo offers the option for a washer and dryer and a dishwasher. This unrivaled feature gives you true residential amenities.



## **BATHROOM**

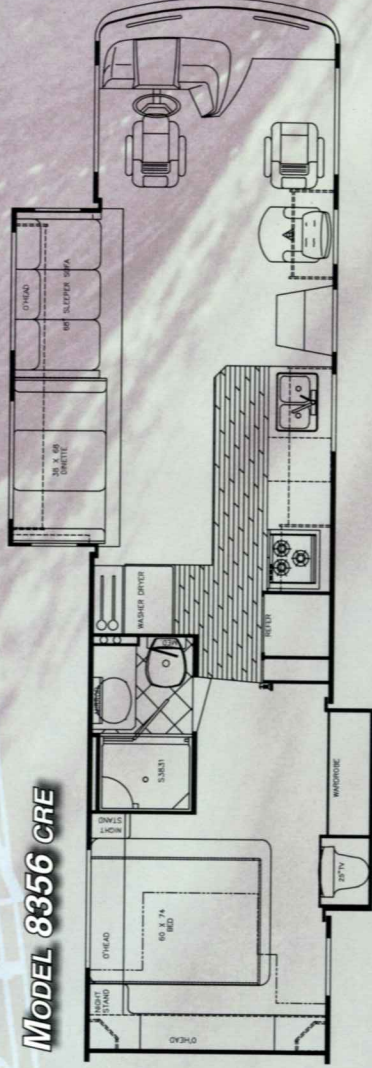
Examine the large residential bathroom. You will not feel cramped in this awesome design. In fact, enjoy the one-piece fiberglass shower, spacious vanity countertop and high-end commode with plenty of "elbow room".



# CRESCENDO

# Floorplan, Features,

## MODEL 8356 CRE



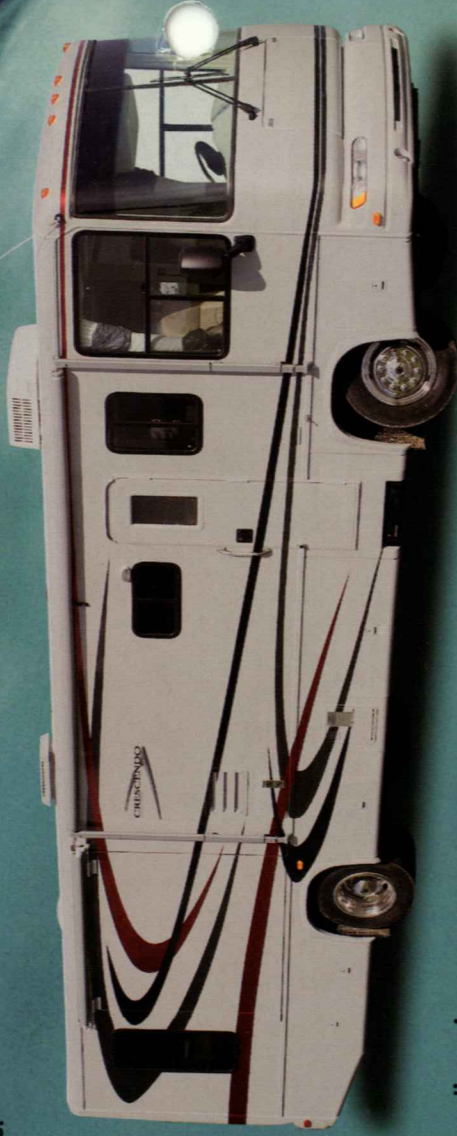
Engine	330 CAT
GVWR	27,910
Wheelbase	228"
Ext. Length	36'-4"
Ext. Height w/AC	11'-10"
Ext. Width	101"
Int. Height	80"
Int. Width	97"
Fresh	75 gal.
Grey	40 gal.
Black	40 gal.
Water Heater w/DSI	10 gal.
LP Gas Tanks	115 lbs.
Fuel Tank (Gal.)	100
Furnace (BTU's)	40,000

In an effort to only build the best, we have developed the #1 floorplan in the RV market. This unique floorplan takes length, appearance and usage into consideration.

Imagine - a double super-slide 36' diesel floor plan. You will have complete access to your favorite locations.

## EXTERIOR

The revolutionary fiberglass dye and high-end automotive paint make the Crescendo's curb appeal unparalleled. An addition to the looks, the Raised Rail construction gives you awesome exterior storage, as well as plentiful capacities for storage tanks. You get all the benefits in this diesel pusher motorhome.



## COMFORTABLY DESIGNED COCKPIT

The cockpit is ergonomically designed to bring the controls to your fingertips. Large easy to read gauges and luxurious seating will make your driving time more comfortable.



## SPACIOUS PASS-THROUGH STORAGE

The cradle of strength construction, which has made Gulf Stream the most trusted construction philosophy in the RV industry today is established with



*Cradle of Strength*

1. Seamless Fiberglass Roof For Greater Energy Efficiency and Dependability.
2. Luan Decking for Additional Strength.
3. Molded, High Density EPS (Expanded Polystyrene) Roof Brick Insulation - Provided Consistent Insulation Value as well as Superior Dimensional Rigidity.
4. One-Piece Formed Aluminum Air Conditioning Duct, Completely Surrounded By EPS Insulation.
5. Bubble-Wrapped Foil Insulation Provides Superior Insulation and Helps Prevent Condensation.
6. Rugged Welded Tubular Aluminum Roof Framing.
7. Rugged Heavy-Gauge Tubular Aluminum, Fixture Welded to Form the Sidewall Framing.
8. High-Density EPS Insulation Provides Superior Lamination and Bonding Characteristics and Insures Greater Energy Efficiency.
9. Interior Wall Panels Securely Laminated to Sidewall Framing.
10. "Super Slick" Fiberglass Exterior Vacuum-bond Laminated to Sidewall Framing for Lasting Beauty and Durability.
11. High-Quality Stain-Resistant Carpeting Available in Designer Coordinated Colors.
12. Extra-Thick Padding Under Carpet Provides Extra Comfort and Increases Carpet Durability.
13. Seamless Structurewood Floor Decking Laminated to Steel Floor Structure Assures a Quiet, Long-Lasting Rigid Floor and comes with a 10-Year Warranty.
14. Heavy-Gauge Tubular Steel Framing, Fixture Welded for Extra Strength and Stability.
15. Heavy-gauge Tubular Steel Framed, Fixture Welded Floor Truss System Provides the Strongest Foundation in the Industry.
16. Seamless Layer of Galvanized Steel Securely Laminated to the Steel Floor Framing.
17. Galvanized Steel Used to Form Each Storage & Holding Compartment.
18. Durable All-Weather Carpeting Completes Each Accessible Storage Compartment, Providing Extra Protection for Luggage and Valuables.
19. Rust-Prohibitive Paint Coating Applied to All Steel Framing Assures Corrosion and Rust Protection.
20. The Industry's Strongest, Most Spacious Exterior Storage Compartments.

## Interior & Decor

- Natural Oak Cabinet Doors
- 22" Metal Drawer Guides w/Nylon Rollers.
- Silverware Drawer and Drawer Front
- Residential Sized Cabinets and Overheads
- Windshield Privacy Drape
- 3-Way Driver & Passenger Seats
- Deluxe Carpet w/Pad
- Coordinated Bedsread & Pillow Shams
- Lighted Closets
- Decorator Mirror (where available)
- Generous Overhead Storage
- Pleated Shades
- Crown Molding Throughout

## Appliances

- 3-Burner High-Performance Range
- Lighted Power Range Hood
- Double Door, 2-Way Refrigerator

## Bath & Water

- Demand Water System
- City Water Hook-Up
- Kitchen Sink Cover
- Residential Rectangular Shower
- Mirrored Medicine Cabinet
- Deluxe Pedal Stool w/Sprayer
- Sky Dome Over Shower
- Glass Shower Enclosure

## Electrical Systems

- Easy-Access Dual Battery System
- 12-volt, 45-Amp Converter
- Electric Supply Cord
- Electric Overload Protection
- Automotive-Type, Color-Coded Wiring

- Lighted Entry & Aisle Lights
- Directional Reading/Map Lights
- Battery Disconnect
- Sony Home Theater Surround Sound

## Exterior & Construction

- "Cradle of Strength" Construction:
  - Welded Steel Sub-Floor Truss System
  - 1-1/2" Tubular Metal Cage Construction on Sidewalls & Roof
  - Insulated Floors w/Virtually Seamless Structurewood Decking
  - Vacuum-Bond Laminated 2" Thick Sidewall Construction Smooth Filon Fiberglass
- High-Density Block Foam Insulation Throughout Sidewalls, Roof & Floor
- Radiused Laminated Fiberglass Roof w/Tubular Metal Rafter
- Molded Roof Brick Insulation in Roof, Surrounding Ducted Roof A/C Vents
- Heated & Fully Enclosed Holding Tanks
- Automotive-Style Bumpers
- Deluxe Outside Mirrors
- Generous Pass-Through Basement Storage
- Hinged Exterior Storage Doors
- Exterior Storage Compartment Latches & Locks
- Fully Welded Steel Firewall
- Below Floor Storage Area's are Laminated with Galvanized Steel (not plastic)
- Deluxe Exterior Paint Graphics

## Heating, Ventilation & A/C

- Ducted Furnace w/Elect. Ignition (40,000 BTU's)
- Ducted Roof A/C

## Chassis

- Freightliner Custom Chassis, Catipillar 330 HP, Rear Radiator 860 ft. lb. Torque, Allison 6-Speed Electronically Shifted Automatic Transmission
- C-Channel Type, Raised-Rail Steel Chassis Frame
- Anti-Lock Brake System
- Air Brakes w/Pure Air Plus Heated Air Dryer
- Full Air-Ride Suspension w/Auto Leveling System
- Allison MD 3060P 6-Speed Electronically Shifted Automatic Transmission
- 22.5 Radial Tires
- Steel Wheel Inserts

## Deluxe Standard Features

- Auto Dash Air Conditioner
- Auto Cruise Control
- AM/FM CD w/4 Spkrs.
- Monitor Panel
- Stainless Steel Entry Handle
- Power Vent in Commode
- Converter w/Battery Charger
- Auxiliary Battery
- 25" Color TV in Bedroom
- Carbon Monoxide Detector
- TV Antenna
- LP Gas Leak Detector
- Awning Rail
- Microwave Oven w/Built In Range Vent
- Flush Floor Slideouts

## Popular Options

- Convection Oven
- Dishwasher
- Washer/Dryer
- 10 Disc CD Changer
- Diesel Generator

A FULL-LINE RV

GULF STREAM  
COACH, INC.

MANUFACTURER



**LUXURY DIESEL**

Scenic Cruiser • Friendship G7 • Atrium  
Yellowstone • Crescendo



**CLASS A MOTORHOMES** • Sun Voyager • Ultra Supreme • Independence



**CLASS B MOTORHOMES**

B Touring Cruiser  
Vista Cruiser MB



**CLASS C MOTORHOMES** • Conquest • Ultra • Independence • Endura



**TOWABLES** • Prairie Schooner • Mako • Stream-Lite • Ameri-Lite • Conquest



**GULF STREAM FACILITIES...**

Located in the heart of the Amish country, the complex, along with Gulf Stream's affiliate, Fairmont Homes, Inc., covers over 400 acres and includes more than 1.5 million square feet of state-of-the-art manufacturing facilities. With over 20 years of manufacturing experience producing quality Recreational Vehicles, Gulf Stream is the leading manufacturer of high quality and high value RV products that are distributed through a partnership relation with independent dealers who are focused on meeting customer expectations.

**GULF STREAM EXCEPTIONAL VALUE...**

Your family and friends will feel safe and comfortable wrapped in Gulf Stream's "Cradle of Strength". Comfort, Quietness and Insulation from the elements is what you will experience from Gulf Stream's "Tried and Tested" Motorhomes. Compare... and you will find the exceptional value of a Gulf Stream Motorhome.

Gulf Stream's manufacturing facilities in Nappanee, Indiana.



VISIT [WWW.GULFSTREAMRV.COM](http://WWW.GULFSTREAMRV.COM)

FOR MORE DETAILED INFORMATION...  
OR CALL 1-800-765-8787-EXT. 3288



POST OFFICE BOX 1005

NAPPANEE, IN 46550

• YOUR GULF STREAM COACH DEALER •

For more information and available option, contact your local Gulf Stream dealer, [www.gulfstreamrv.com](http://www.gulfstreamrv.com) or Gulf Stream Coach, Inc. Gulf Stream Coach, Inc. reserves the right to make changes in prices, colors, materials, components and specifications and to discontinue models at any time without notice or obligation. Gulf Stream Coach, Inc. assumes no responsibility for any error in type or print reproduction of specifications or floorplans in this brochure. Photographs may show equipment or items that are optional and are not included in the purchase price of the coach. Test drive and review a current model at your nearest Gulf Stream dealer. © 2002 Gulf Stream Coach, Inc., Nappanee, Indiana U.S.A.