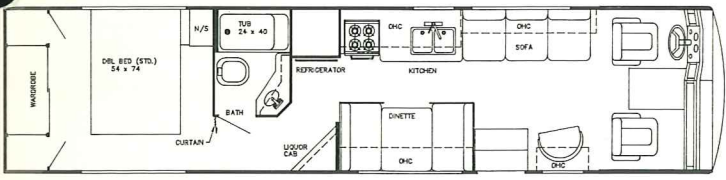


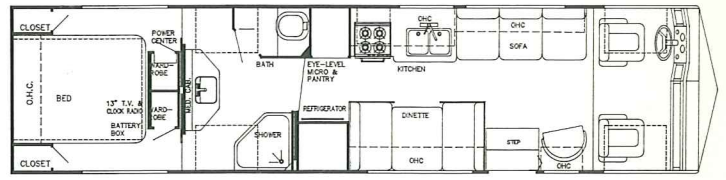
11/91



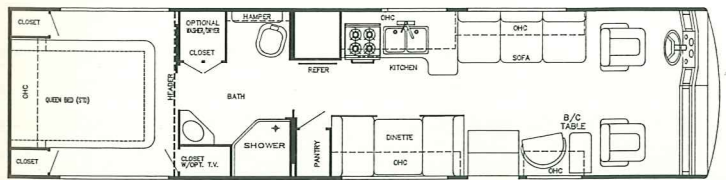
# THE ALL-NEW GULF STREAM 2000



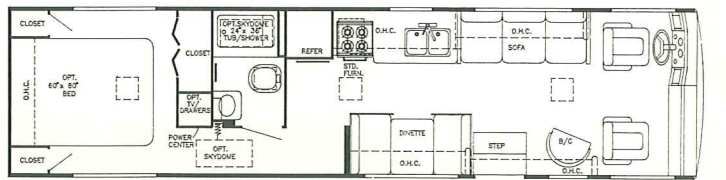
Model 8343



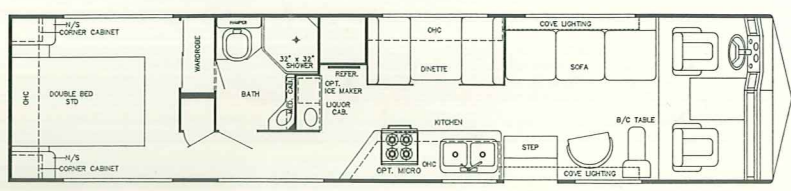
Model 8345



Model 8346 (Spartan Diesel Pusher)



Model 8351 (Oshkosh Diesel Pusher)



Model 8370

## Standard Specifications

### Interior and Decor

- Island KOA, High-Impact/High-Pressure, Roll Formed, Laminate Cabinetry w/Hardwood Frames
- Raised Island KOA, High-Impact/High-Pressure, Roll Formed, Laminate Cabinet Doors
- Laminated Formica Paneling
- Metal Drawer Guides w/Nylon Rollers
- Radius Cabinet & Wall Corners
- Ceramic Tile Countertop in Kitchen
- Custom Padded Dash w/Illuminated Gauges
- Deluxe Furniture
- 3-Way Driver & Passenger Seats
- Deluxe Carpet w/Pad
- Lighted Closets
- Coordinated Bedspread & Shams
- Fabric -Covered Shelving
- Generous Overhead Storage

### Exterior and Construction

- Unified Steel Body Structure
- Radius Laminated Rubber Roof w/Steel Rafters
- Low Profile Transition Radius Roof Reinforced w/12-Gauge Truss-Styled Structure
- Impact-Resistant Polyurethane Automotive-Style Bumpers
- Hinged Exterior Storage Doors, Full Length of Coach
- Hinged Fiberglass Wheel Wells
- Super-Structure Steel Truss-Type Floor System
- Laminated Floors w/Metal Underbelly
- Laminated 2" Thick Floor, Wall & Roof Construction (50% Thicker Than Most Competitors)
- R-7.5 1-1/2" Block Foam Insulation in Floor, Walls & Roof
- Sidewalls Lag-Bolted Every 8" to Floor Structure
- One-Piece Rear Fiberglass Cap
- Fully -Welded Steel Firewall
- Sealed Perimeter & Engine Compartment
- Fiberglass-Impregnated Luan Sidewalls
- Panoramic Windshield
- Tinted Windshield & Windows
- Automotive-Styled Aerodynamic Exterior
- Awning Rail
- Extraordinary Exterior Storage

### Electrical Systems

- Easy-Access Dual Battery System
- 12-Volt, 45 Amp Converter
- Electric Overload Protection
- Electric Supply Cord
- Generator Compartment
- Automotive-Type Color-Coded Wiring
- Pre-Wired for Stereo Speakers
- Lighted Entry Way & Aisle Lights
- Directional Reading & Map Lights
- Gold Framed Clock

### Chassis (Most Models)

- 454 C.I.D. V-8 Engine
- Super-Duty Ford w/460 V-8 Engine w/4-Speed Automatic Transmission

### Chassis (Model 8351)

- Oshkosh X-Line Chassis w/6BTA Cummins Diesel Pusher, 190HP @ 2500 RPM, 475 ft.lb. Torque @ 1700 RPM, Turbo Charged & After Cooled

### Chassis (Model 8346)

- Spartan Diesel Chassis w/6BTA Cummins Diesel Pusher, 230HP @ 2500 RPM, 605 ft.lb. Torque @ 1700 RPM, Turbo Charged & After Cooled
- Allison MT 643 4-Speed Auto. Trans.
- Stemco Seals - Bearings Lubricated W/Oil Instead of Grease
- Air Brakes w/Bendix Westinghouse AD 4 Air Dryer

### Spec.'s

- Wheel Base:
  - Model 8343 - 208"
  - Model 8345 - 208"
  - Model 8346 - 208"
  - Model 8351 - 228"
  - Model 8370 - 208"w/tag
- Exterior Length:
  - Model 8343 - 34'
  - Model 8345 - 34'
  - Model 8346 - 34'
  - Model 8351 - 35'
  - Model 8370 - 37'
- Interior Height -Approx. 6'-11"
- Exterior Height -Approx. 11'
- Exterior Width -Approx. 8'
- Fuel Tank -Approx. 75 Gal on Ford Chassis -Approx. 100 Gal. on Diesel

### Bath and Water

- Dual Holding Tanks-Approx. 90 Gal.
- Fresh Water Tank- Approx. 42 Gal.
- Demand Water System
- City Water Hook-Up
- Double Stainless Steel Sink
- Sink Covers
- Marine Toilet
- Gravity Drains on Fresh Water Lines
- Mirrored Medicine Cabinet

### Appliances

- 4-Burner Range
- Lighted Power Range Hood
- Double-Door, 2-Way Refrigerator
- Microwave-Ready

### Deluxe Standard Features

- Wheel Covers
- Auto Dash Air Conditioner
- Auto Cruise Control
- AM/FM Cassette w/4 Speakers
- Monitor Panel
- Automatic Emergency Start Switch
- Power Vent in Commode
- Converter w/Battery Charger
- Auxiliary Battery
- Generator Ready
- 85 lb. LP Tank

### Heating, Vent. and Air Cond.

- 40,000 BTU Ducted Furnace w/Electronic Ignition (Most Models)
- Pre-Wired for Roof Air Conditioning

For further information and available floorplan options, contact your local dealer or Gulf Stream Coach, Inc. Gulf Stream Coach, Inc. reserves the right to make changes in prices, colors, materials, components, and specifications and to discontinue models at any time without notice or obligation. Gulf Stream Coach, Inc. assumes no responsibility for any error in type or print reproduction of specifications or floorplans in this brochure. 10M SCG 11/91

Your Dealer



**Gulf Stream Coach, Inc.**

P.O. Box 1005 • Nappanee, IN 46550