

# ULTRA *Supreme*

*Comfortable Travel with Friends and Family*



**GULF STREAM**  
COACH, INC.

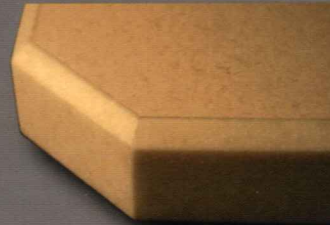


## Exclusive Features



- 27" TV built into generous overhead storage
- Steel cage constructed overhead for added protection and durability
- Optional 7" back-up monitor
- TV Antenna w/ Amp and Boost (2 Jacks)
- AM/FM CD Stereo w/ 4 Speakers

7' interior ceiling height  
Residential hardwood  
trim and door jambs



Corian™ edged  
counter tops  
throughout



Designer Edition  
DELUXE HIDE-A-BED SOFA  
By Plain Interiors, Inc.

Family friendly sleeping arrangements in every floorplan with a full size Deluxe Hide-A-Bed Sofa that sets up in seconds and leaves plenty of floor space to get around the coach.

- Soft Touch Ceiling



Dual metal H-ducted air conditioning system with foil bubble wrapped insulation for improved climate control



Functional kitchen area with residential style cabinets featuring more storage space for the long trip. Hand crafted hardwood doors and stiles with residential hardware, microwave oven, 3-burner range with lighted hood, 2-door 2-way refrigerator and decorative wall borders.



Residential constructed drawers with dual metal drawer slides



Seamless Armstrong™ Midstar flooring in the kitchen, bath and hallway



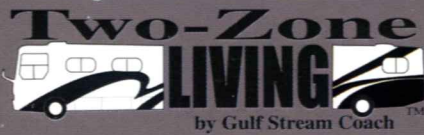
The Ultra Supreme utilizes flush floor slide-room technology providing extra headroom and no step-up making a very comfortable dinette and sitting area.



## Unique Floorplans



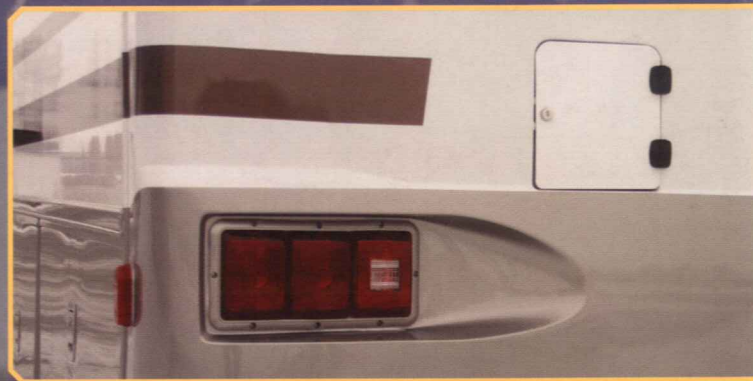
The 8353 Ultra Supreme features a master suite complete with his and her wardrobes on either side of a Queen size bed, double sinks with vanity storage and a one-piece deluxe tub with glass surround. Two-Zone Living™, not just a bedroom, the master suite has a sitting chair, desk area, place for a second TV and a door. Two-Zone Living™ enables entertaining friends and family in the living zone while quietly relaxing in the second zone.



The 8353 Ultra Supreme is prepped for installation of a washer/dryer,



## Exterior Features



Convenient rear center fill gas tank.

Aluminum skinned bus style doors with heavy-duty slam latches and thick rubber seals.

Galvanized steel storage compartments.



## Cradle of Strength

It all begins with a good foundation... that keeps getting better after 20 years of producing quality motorhomes.

Ultra Supreme trusses are rated to 6,000 lbs. per truss designed to dissipate the tremendous forces that are transferred to the coach from the chassis, much like a bridge truss dissipates extreme and concentrated loads that it encounters. This foundation supports abundant basement storage and adds rigidity to the rest of the coach. No other manufacturer offers this exclusive design.

### Exterior construction features

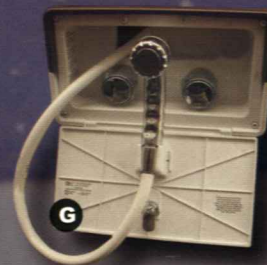
- Vacuum-bond laminated sidewalls
- High density block foam insulation
- Enclosed and heated holding tanks
- Radius entry door
- Smooth fiberglass exterior
- Tinted windows
- Automotive style caps front and rear
- Seamless fiberglass roof
- Painted skirt
- All paint exterior graphics
- Full chassis rail extension
- Hydraulic Leveling System



The design is set up to transfer weight to the center rails.

# ULTRA Supreme

# Ultra Koala

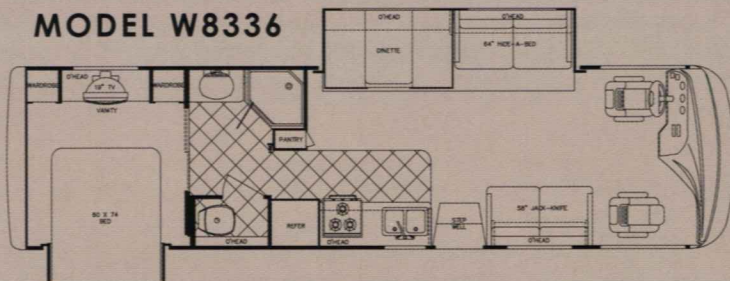


Available on all Ultra Supreme floorplans

### MODEL W8328



### MODEL W8336



Chassis	Ford V-10	Black	50 gal
Fuel	75 gal	Grey	50 gal
GVWR	20,500	Fresh	55 gal
Length	33'-4"	LP Gas Tank	85 lbs.
Height	11'-6"	Furnace	40,000 BTUs
Width	100"	Ducted A/C	13,500 BTUs
Wheelbase	208"	Water Heater	6 gal

Chassis	Ford V-10	Black	50 gal
Fuel	75 gal	Grey	50 gal
GVWR	20,500	Fresh	55 gal
Length	33'-4"	LP Gas Tank	85 lbs.
Height	11'-6"	Furnace	40,000 BTUs
Width	100"	Ducted A/C	13,500 BTUs
Wheelbase	208"	Water Heater	6 gal

Supreme  
Pak



## Introducing the New Koala Package.

Upgrade Your Ultra Supreme with the new Koala package. This value packed option includes:

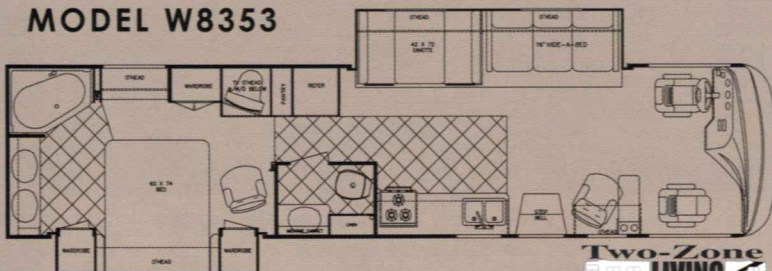
- Thermal Pane Windows (A)
- Corian™ Countertops in Kitchen (B)
- Fantastic Fans™ w/ Rain Sensor (C)
- Solar Charger (D)
- Satellite Dish w/o Receiver (E)
- Water Filter (F)
- Outside Rinse & Wash System (G)
- Hella™ Fog Lights (H)
- Upgrade Paint & Graphics (I)
- Fluorescent Lights (J)



### Popular Options

- Bedroom 11,000 BTU Ducted A/C w/ Selector Switch
- 7" Back Up Monitor
- Exclusive Bedroom Ceiling Overhead TV (8328)
- Computer Work Station (8359)
- Onan™ or Generac™ Generator
- 50 Amp Service
- Drivers Door
- VCR
- Wheel Covers
- Wheel Liners
- Spare Tire
- Rear Ladder
- Washer/Dryer Combo (8353)

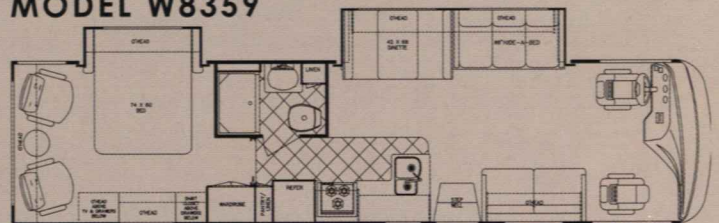
### MODEL W8353



Two-Zone  
LIVING  
by Gulf Stream Coach

Chassis	Ford V-10	Black	50 gal
Fuel	55 gal	Grey	50 gal
GVWR	22,000	Fresh	55 gal
Length	36'-8"	LP Gas Tank	85 lbs.
Height	11'-6"	Furnace	40,000 BTUs
Width	100"	Ducted A/C	13,500 BTUs
Wheelbase	242"	Water Heater	10 gal

### MODEL W8359



Two-Zone  
LIVING  
by Gulf Stream Coach

Chassis	Ford V-10	Black	50 gal
Fuel	75 gal	Grey	50 gal
GVWR	22,000	Fresh	55 gal
Length	35'-8"	LP Gas Tank	85 lbs.
Height	11'-6"	Furnace	40,000 BTUs
Width	100"	Ducted A/C	13,500 BTUs
Wheelbase	242"	Water Heater	6 gal



FRIENDSHIP • CLASS A



YELLOWSTONE • CLASS A



ATRIUM • CLASS A



SUN VOYAGER • CLASS A



INDEPENDENCE • CLASS A



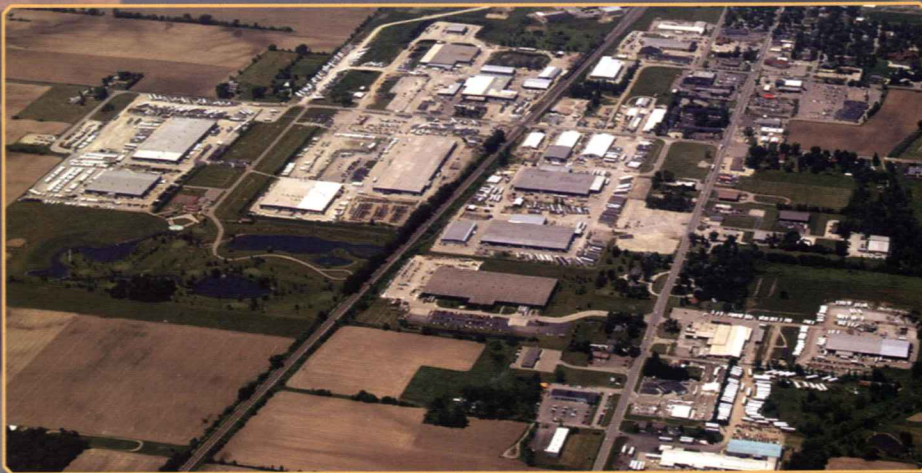
CONQUEST • CLASS C



B TOURING CRUISER



# A FULL LINE OF PRODUCTS



## Gulf Stream Facilities...

Pictured is an aerial view of Gulf Stream's manufacturing facilities in Nappanee, Indiana.

Located in the heart of Amish country, the complex, along with Gulf Stream's affiliate, Fairmont Homes, Inc., covers over 400 acres and includes more than 1.5 million square feet of manufacturing facilities under roof.

With over 20 years of manufacturing experience producing quality Motorhomes, Gulf Stream offers the stability you're looking for in an RV company.

## Gulf Stream Exceptional Value...

Your family and friends will feel safe and comfortable wrapped in Gulf Stream's "Cradle of Strength". Comfort, Quietness and Insulation from the elements is what you will experience from Gulf Stream's "Tried and Tested" Motorhomes.

Compare... and you will find the exceptional value of a Gulf Stream Motorhome.

**VISIT**  
[WWW.GULFSTREAMRV.COM](http://WWW.GULFSTREAMRV.COM)  
**FOR MORE DETAILED INFORMATION...**  
**OR CALL 1-800-765-8787-EXT. 3288**



**POST OFFICE BOX 1005 NAPPANEE, IN 46550**  
**● YOUR DEALER ●**

For more information and available option, contact your local Gulf Stream dealer, [www.gulfstreamRV.com](http://www.gulfstreamRV.com) or Gulf Stream Coach, Inc. Gulf Stream Coach, Inc., reserves the right to make changes in prices, colors, materials, components and specifications and to discontinue models at any time without notice or obligation. Gulf Stream Coach, Inc., assumes no responsibility for any error in type or print reproduction of specifications or floorplans in this brochure. Photographs may show equipment or items that are optional and are not included in the purchase price of the coach. Test drive and review a current model at your nearest Gulf Stream dealer. © 2002 Gulf Stream Coach, Inc., Nappanee, Indiana U.S.A.

02/03-SP-10k